

# **RHINEBECK CENTRAL SCHOOL DISTRICT**

**STUDENT ACHIEVEMENT DATA REPORT**  
School Year 2008 - 2009



**PREPARED BY**  
**MARVIN KREPS**  
**Director of Curriculum and Instruction**

## Table of Contents

<b>CHANCELLOR LIVINGSTON ELEMENTARY SCHOOL</b> .....	3
<b>Elementary Percent Proficient</b> .....	4
<b>2008-09 Grade 3-8 English Language Arts</b> .....	5
2007-2008 ELA General Education/Special Education Student Achievement Comparison .....	6
2008-2009 ELA General Education/Special Education Student Achievement Comparison .....	6
<b>Grade 3-8 Mathematics</b> .....	7
2007-2008 Math General Education/Special Education Student Achievement Comparison.....	8
<b>Grade 4 Science</b> .....	9
<b>Grade 5 Social Studies</b> .....	10
<b>Grade 3-8 English Language Arts Results</b> .....	11
Results by Performance Level.....	11
Results by Student Group.....	11
<b>Grade 3-8 Mathematics Results</b> .....	12
Results by Performance Level.....	12
Results by Student Group.....	12
<b>2002-2003 to 2013-2014 Annual Measureable Objectives</b> .....	13
Grade 3-5 English Language Arts .....	13
Grade 3-5 Mathematics .....	14
<b>BULKELEY MIDDLE SCHOOL</b> .....	15
<b>Middle School Percent Proficient</b> .....	16
<b>2008-09 Grade 3-8 English Language Arts</b> .....	17
<b>Grade 3-8 Mathematics</b> .....	18
<b>Grade 8 Science</b> .....	19
<b>Grade 8 Social Studies</b> .....	20
<b>Grade 3-8 English Language Arts Results</b> .....	21
Results by Performance Level.....	21
Results by Student Group.....	21
<b>Grade 3-8 Mathematics Results</b> .....	22
Results by Performance Level.....	22
Results by Student Group.....	22
<b>2002-2003 to 2013-2014 Annual Measureable Objectives</b> .....	23
English Language Arts - Grade 6-8.....	23
Mathematics - Grade 6-8.....	24
<b>RHINEBECK HIGH SCHOOL</b> .....	25
<b>2007-2008 Regents Exam Results</b> .....	26
<b>2004 Total Cohort Performance on Regents Exams</b> .....	27
English Language Arts Results .....	27
Mathematics Results.....	28
Social Studies and Science Results .....	28
<b>English Language Arts Regents</b> .....	29
<b>Mathematics A Regents</b> .....	30
<b>Rhinebeck High School Mean SAT Scores</b> .....	32
<b>Rhinebeck High School AP Exam Results</b> .....	32
<b>2002-2003 to 2013-2014 Annual Measureable Objectives</b> .....	33
Secondary English Language Arts .....	33
Secondary Mathematics.....	33
<b>RCT and Second Language Proficiency</b> .....	34

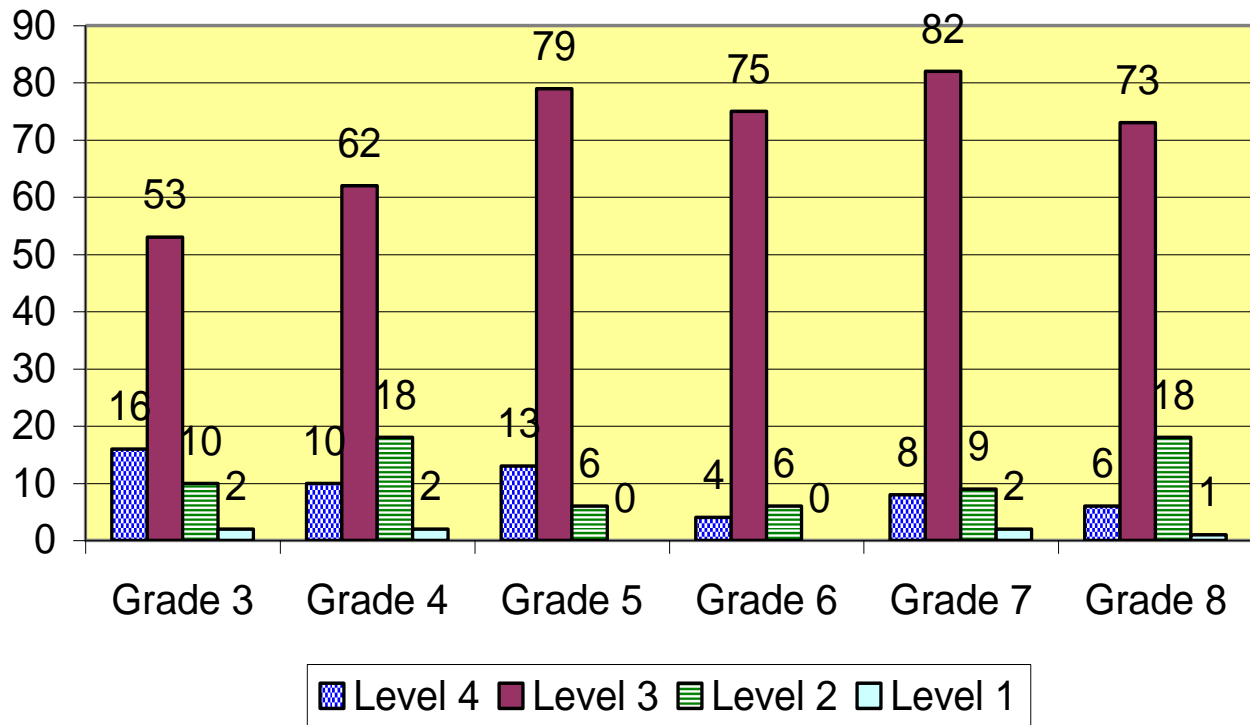
**CHANCELLOR LIVINGSTON  
ELEMENTARY SCHOOL  
STUDENT ACHIEVEMENT DATA**

**2008 - 2009**

## New York State Assessments Elementary Percent Proficient 2008-2009

	2001-2002	2002-2003	2003-2004	2004-2005	2005-2006	2006-2007	2007-2008	2008-2009
<b>English Language Arts</b>	63%	80%	68%	78%	3: 73% 4: 80% 5: 79%	3: 82% 4: 82% 5: 82%	3: 73% 4: 80% 5: 92%	3: 85% 4: 78% 5: 94%
<b>Math</b>	62%	88%	84%	91%	3: 88% 4: 85% 5: 73%	3: 93% 4: 92% 5: 79%	3: 92% 4: 90% 5: 92%	3: 96% 4: 88% 5: 91%
<b>Science Grade 4</b>	97%	92%	81%	82%	95%	99%	97%	95%
<b>Social Studies Grade 5</b>	99%	88%	86%	86%	94%	91%	95%	94%

## New York State Assessments Grade 3-8 English Language Arts 2008-2009



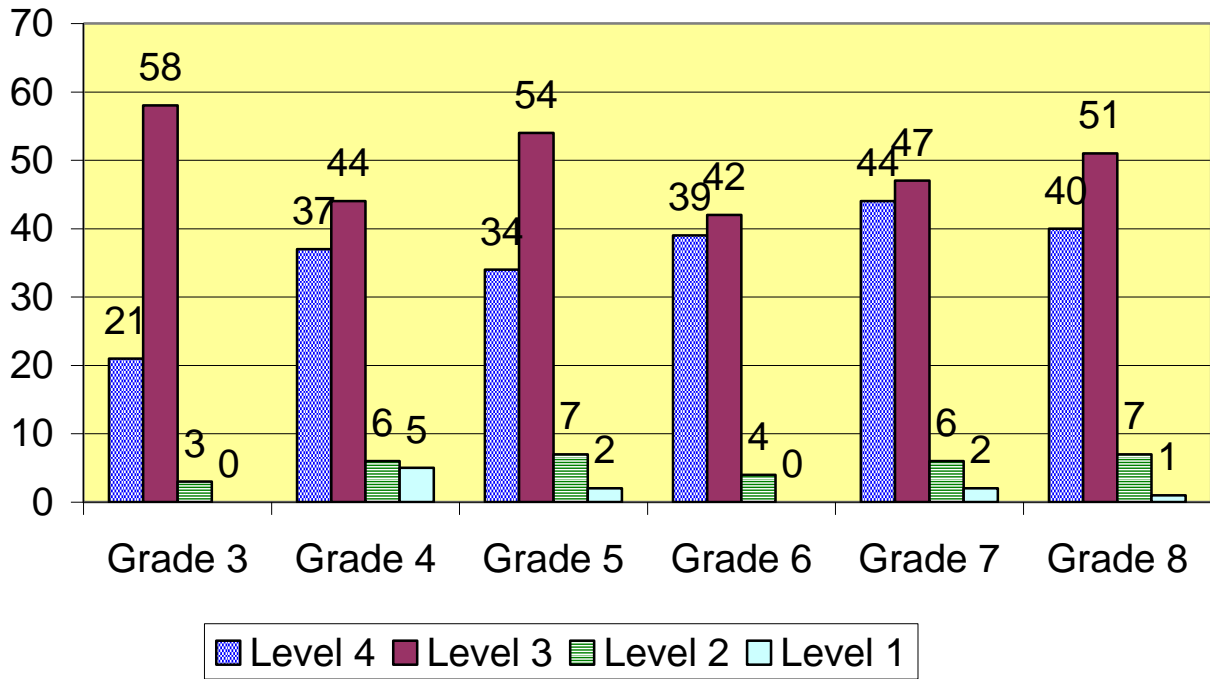
Student Performance Level	Grade 3		Grade 4		Grade 5		Grade 6		Grade 7		Grade 8	
Level 4	16	20%	10	11%	13	13%	4	5%	8	8%	6	6%
Level 3	53	65%	62	67%	79	81%	75	88%	82	81%	73	74%
Level 2	10	12%	18	20%	6	6%	6	7%	9	9%	18	18%
Level 1	2	2%	2	2%	0	0%	0	0%	2	2%	1	1%
% Proficient	85%		78%		94%		93%		89%		81%	
Students Tested	81		92		98		85		101		98	

*\*Percentage may not total 100 due to rounding.*

**2008-2009 ELA General Education/Special Education Student  
Achievement Comparison**

	<b>Proficiency Totals All Students</b>	<b>General Education Only</b>	<b>Special Education Only</b>
<b>Grade 3</b>	<b>81 students/85%</b>	<b>74 students/91%</b>	<b>7 students/29%</b>
<b>Grade 4</b>	<b>92 students/78%</b>	<b>78 students/91%</b>	<b>14 students/7%</b>
<b>Grade 5</b>	<b>98 students/94%</b>	<b>88 students/98%</b>	<b>10 students/60%</b>
<b>Grade 6</b>	<b>85 students/93%</b>	<b>68 students/97%</b>	<b>17 students/76%</b>
<b>Grade 7</b>	<b>101 students/89%</b>	<b>86 students/98%</b>	<b>15 students/40%</b>
<b>Grade 8</b>	<b>98 students/81%</b>	<b>83 students/94%</b>	<b>15 students/7%</b>

## New York State Assessments Grade 3-8 Mathematics 2008-2009



Student Performance Level	Grade 3		Grade 4		Grade 5		Grade 6		Grade 7		Grade 8	
	Level 4	21	26%	37	40%	34	35%	39	46%	44	44%	40
Level 3	58	71%	44	48%	54	56%	42	49%	47	47%	51	52%
Level 2	3	4%	6	7%	7	7%	4	5%	6	6%	7	7%
Level 1	-	-	5	5%	2	2%	-	-	2	2%	1	1%
% Proficient	79	96%	81	88%	88	91%	81	95%	91	92%	91	92%
Students Tested	82		92		97		85		99		99	

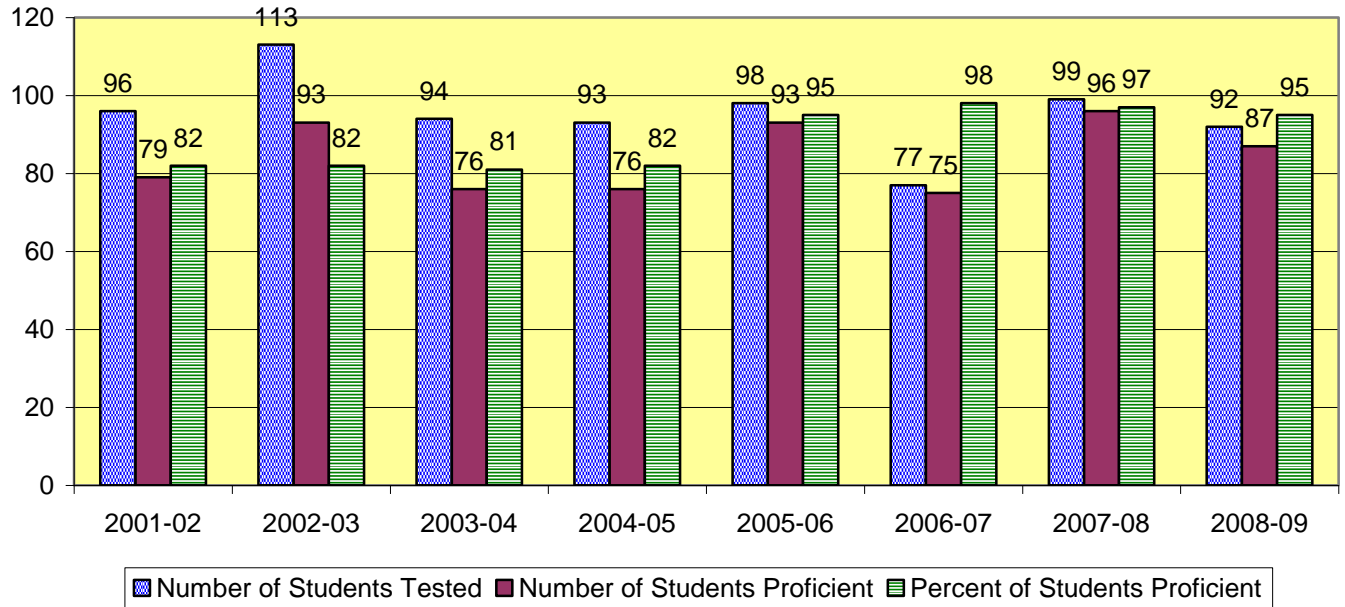
*\*Percentage may not total 100 due to rounding.*

**2008-2009 Math General Education/Special Education Student  
Achievement Comparison**

	<b>Proficiency Totals All Students</b>	<b>General Education Only</b>	<b>Special Education Only</b>
<b>Grade 3</b>	<b>82 students/96%</b>	<b>75 students/99%</b>	<b>7 students/71%</b>
<b>Grade 4</b>	<b>92 students/88%</b>	<b>78 students/99%</b>	<b>14 students/29%</b>
<b>Grade 5</b>	<b>97 students/91%</b>	<b>87 students/95%</b>	<b>10 students/50%</b>
<b>Grade 6</b>	<b>85 students/95%</b>	<b>68 students/97%</b>	<b>17 students/88%</b>
<b>Grade 7</b>	<b>99 students/92%</b>	<b>84 students/100%</b>	<b>15 students/47%</b>
<b>Grade 8</b>	<b>99 students/92%</b>	<b>84 students/100%</b>	<b>15 students/47%</b>



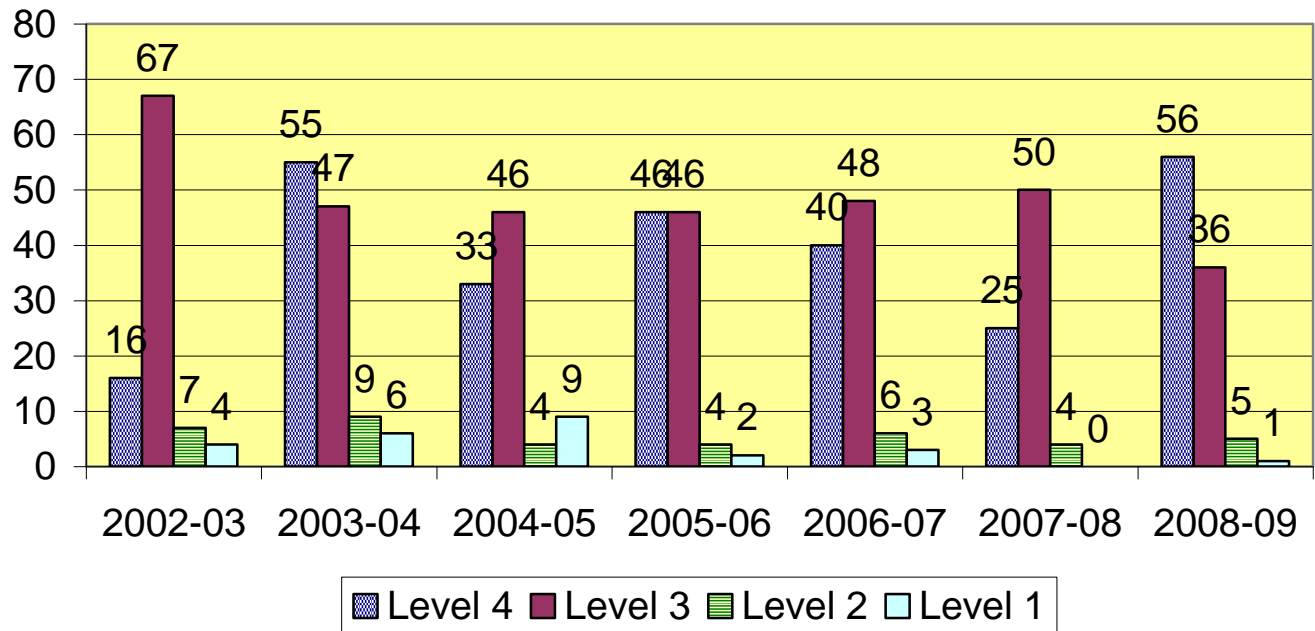
## New York State Assessments Grade 4 Science 2008-2009



	2001-2002	2002-2003	2003-2004	2004-2005	2005-2006	2006-2007	2007-2008	2008-2009
<b>Number of Students Tested</b>	96	113	94	93	98	77	99	92
<b>Number of Students Proficient</b>	79	93	76	76	93	75	96	87
<b>Percent of Students Proficient</b>	82%	82%	81%	82%	95%	98%	97%	95%

*\*Percentage may not total 100 due to rounding.*

## New York State Assessments Grade 5 Social Studies 2008 - 2009



Student Performance Level	2002-2003		2003-2004		2004-2005		2005-2006		2006-2007		2007-2008		2008-2009	
	Level 4	16	17%	55	46%	33	36%	46	47%	40	41%	25	32%	56
Level 3	67	71%	47	40%	46	50%	46	47%	48	49%	50	63%	36	37%
Level 2	7	7%	9	8%	4	4%	4	4%	6	7%	4	5%	5	5%
Level 1	4	4%	6	5%	9	10%	2	2%	3	3%	0	0%	1	1%
% Proficient (level 3 + 4)	83	88%	102	86%	79	86%	92	94%	88	91%	79	95%	92	94%

*\*Percentage may not total 100 due to rounding.*

# Grade 3-8 English Language Arts Results 2008 - 2009

## Results By Performance Level

The number of tested students and the percentage of all tested students performing in each level.

■ Level 3 and above

	Grade 3		Grade 4		Grade 5		Grade 6		Grade 7		Grade 8	
	#	%	#	%	#	%	#	%	#	%	#	%
<b>Level 4</b>	16	20%	10	11%	13	13%	4	5%	8	8%	6	6%
<b>Level 3</b>	53	65%	62	67%	79	81%	75	88%	82	81%	73	74%
<b>Level 2</b>	10	12%	18	20%	6	6%	6	7%	9	9%	18	18%
<b>Level 1</b>	2	2%	2	2%					2	2%	1	1%
<b>Total Tested</b>	81		92		98		85		101		98	

Percentages may not total 100 due to rounding.

## Results By Student Group

The number of tested students and the percentage of all tested students who scored at level 3 and above.

	Grade 3		Grade 4		Grade 5		Grade 6		Grade 7		Grade 8	
	#	%	#	%	#	%	#	%	#	%	#	%
All Students	81	85%	92	78%	98	94%	85	93%	101	89%	98	81%
General Education	74	91%	78	91%	88	98%	68	97%	86	98%	83	94%
Students with Disabilities	7	29%	14	7%	10	60%	17	76%	15	40%	15	7%
American Indian or Alaska Native												
Black or African American	4	S	3	S	2	S			1	S	1	S
Hispanic or Latino	2	S	4	S	4	S	6	S	5	40%	4	S
Asian or Pacific Islander	3	S	2	S	5	100%	3	S	3	S	3	S
White	72	83%	83	76%	87	94%	75	92%	91	92%	90	81%
Multiracial							1	S	1	S		
Small Group Totals (S)	9	100%	9	100%	6	83%	10	100%	5	80%	8	75%
Female	51	82%	44	77%	49	96%	43	95%	51	92%	46	85%
Male	30	90%	48	79%	49	92%	42	90%	50	86%	52	77%
English Proficient	80	-	92	78%	98	94%	85	93%	101	89%	98	81%
Limited English Proficient	1	-										
Economically Disadvantaged	11	82%	5	100%	8	100%	5	60%	5	80%	7	86%
Not Economically Disadvantaged	70	86%	87	77%	90	93%	80	95%	96	90%	91	80%
Migrant												
Not Migrant	81	85%	92	78%	98	94%	85	93%	101	89%	98	81%

Percentages may not total 100 due to rounding.

# Grade 3-8 Mathematics Results 2008-2009

## Results By Performance Level

The number of tested students and the percentage of all tested students performing in each level.

■ Level 3 and above

	Grade 3		Grade 4		Grade 5		Grade 6		Grade 7		Grade 8	
	#	%	#	%	#	%	#	%	#	%	#	%
<b>Level 4</b>	21	26%	37	40%	34	35%	39	46%	44	44%	40	40%
<b>Level 3</b>	58	71%	44	48%	54	56%	42	49%	47	47%	51	52%
<b>Level 2</b>	3	4%	6	7%	7	7%	4	5%	6	6%	7	7%
<b>Level 1</b>			5	5%	2	2%			2	2%	1	1%
<b>Total Tested</b>	82		92		97		85		99		99	

Percentages may not total 100 due to rounding.

## Results By Student Group

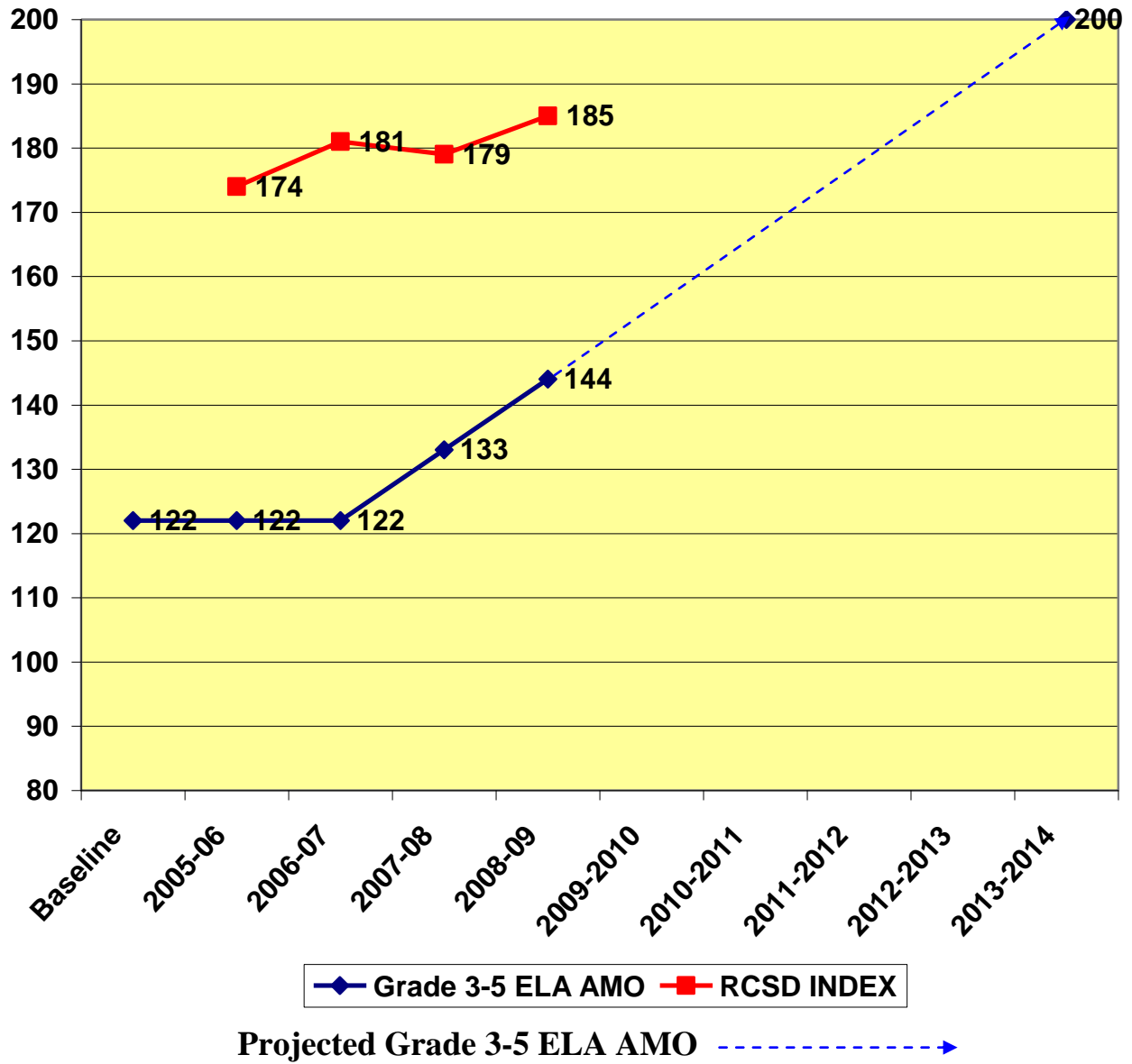
The number of tested students and the percentage of all tested students who scored at level 3 and above.

	Grade 3		Grade 4		Grade 5		Grade 6		Grade 7		Grade 8	
	#	%	#	%	#	%	#	%	#	%	#	%
All Students	82	96%	92	88%	97	91%	85	95%	99	92%	99	92%
General Education	75	99%	78	99%	87	95%	68	97%	84	100%	84	100%
Students with Disabilities	7	71%	14	29%	10	50%	17	88%	15	47%	15	47%
American Indian or Alaska Native												
Black or African American	4	S	3	S	2	S			1	S	1	S
Hispanic or Latino	2	S	4	S	4	S	6	S	5	S	4	S
Asian or Pacific Islander	3	S	2	S	5	100%	3	S	3	S	3	S
White	73	96%	83	87%	86	90%	75	96%	90	93%	91	92%
Multiracial							1	S				
Small Group Totals (S)	9	100%	9	100%	6	100%	10	90%	9	78%	8	88%
Female	52	94%	44	86%	49	90%	43	100%	51	92%	47	96%
Male	30	100%	48	90%	48	92%	42	90%	48	92%	52	88%
English Proficient	81	-	92	88%	97	91%	85	95%	99	92%	99	92%
Limited English Proficient	1	-										
Economically Disadvantaged	11	91%	5	100%	8	88%	5	100%	5	80%	7	100%
Not Economically Disadvantaged	71	97%	87	87%	89	91%	80	95%	94	93%	92	91%
Migrant												
Not Migrant	82	96%	92	88%	97	91%	85	95%	99	92%	99	92%

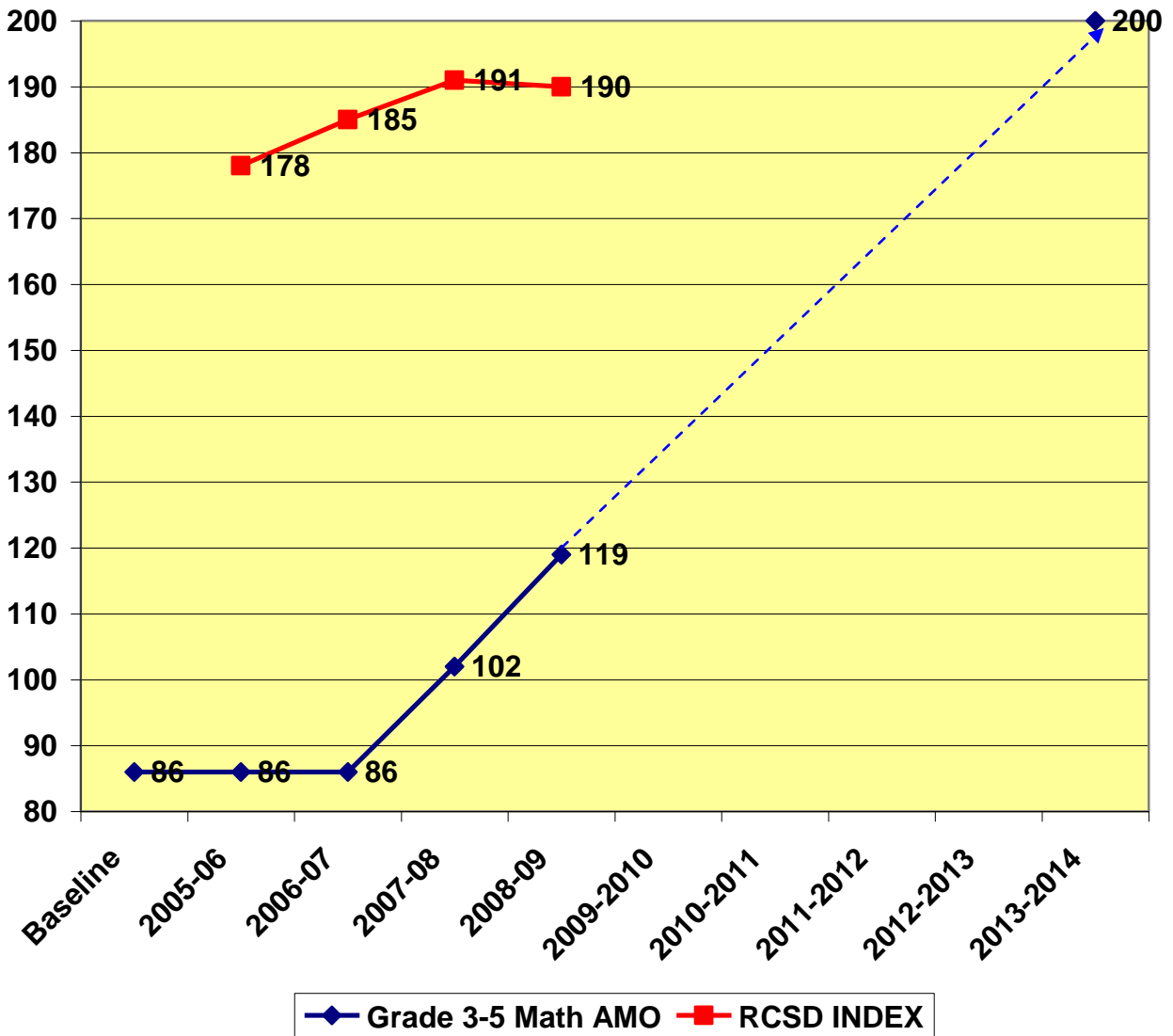
Percentages may not total 100 due to rounding.

# Annual Measureable Objectives 2002-2003 to 2013-2014

## Annual Objectives Using Performance Index Grade 3-5 English Language Arts



## Annual Objectives Using Performance Index Grade 3-5 Mathematics



**Projected Grade 3-5 Math AMO**



**BULKELEY MIDDLE SCHOOL  
STUDENT ACHIEVEMENT DATA**

**2008-2009**

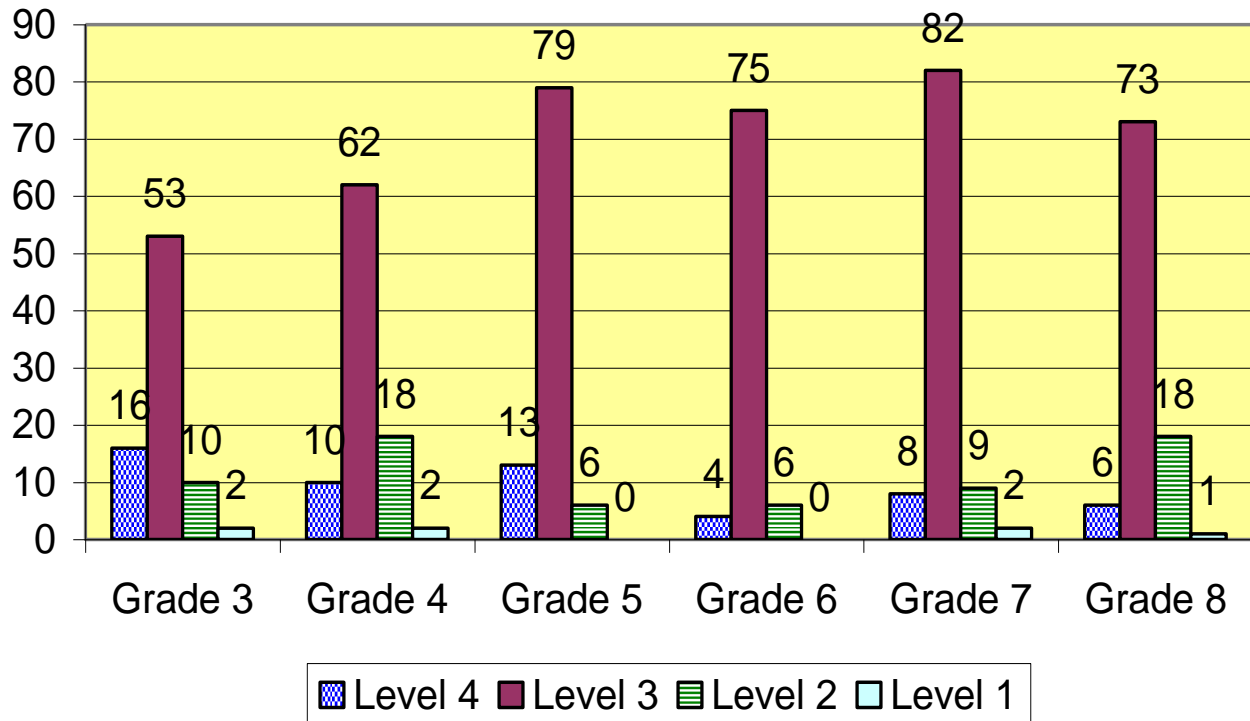
## New York State Assessments Middle School Percent Proficient 2008-2009

	2001- 2002	2002- 2003	2003- 2004	2004- 2005	2005- 2006	2006- 2007	2007- 2008	2008- 2009
<b>English Language Arts</b>	65%	68%	51%	65%	6: 76% 7: 74% 8: 70%	6: 83% 7: 72% 8: 79%	6: 84% 7: 86% 8: 72%	6: 93% 7: 89% 8: 81%
<b>Math</b>	66%	79%	74%	79%	6: 73% 7: 82% 8: 68%	6: 87% 7: 86% 8: 87%	6: 88% 7: 95% 8: 89%	6: 95% 7: 92% 8: 92%
<b>Science Grade 8</b>	97%	92%	85%	91%	90%	96%	91%	92%
<b>Social Studies Grade 8</b>	80%	69%	68%	87%	79%	89%	86%	91%

*\*Percentage may not total 100 due to rounding.*

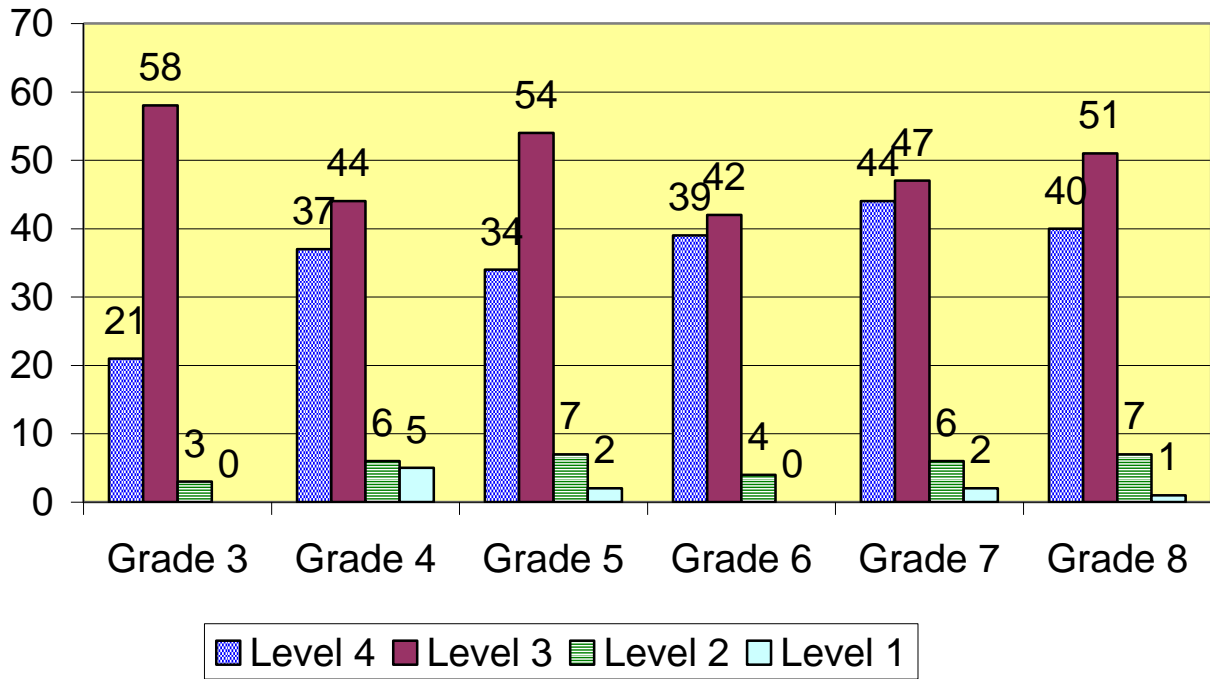


## New York State Assessments Grade 3-8 English Language Arts 2008-2009



Student Performance Level	Grade 3		Grade 4		Grade 5		Grade 6		Grade 7		Grade 8	
Level 4	16	20%	10	11%	13	13%	4	5%	8	8%	6	6%
Level 3	53	65%	62	67%	79	81%	75	88%	82	81%	73	74%
Level 2	10	12%	18	20%	6	6%	6	7%	9	9%	18	18%
Level 1	2	2%	2	2%	0	0%	0	0%	2	2%	1	1%
% Proficient	85%		78%		94%		93%		89%		81%	
Students Tested	81		92		98		85		101		98	

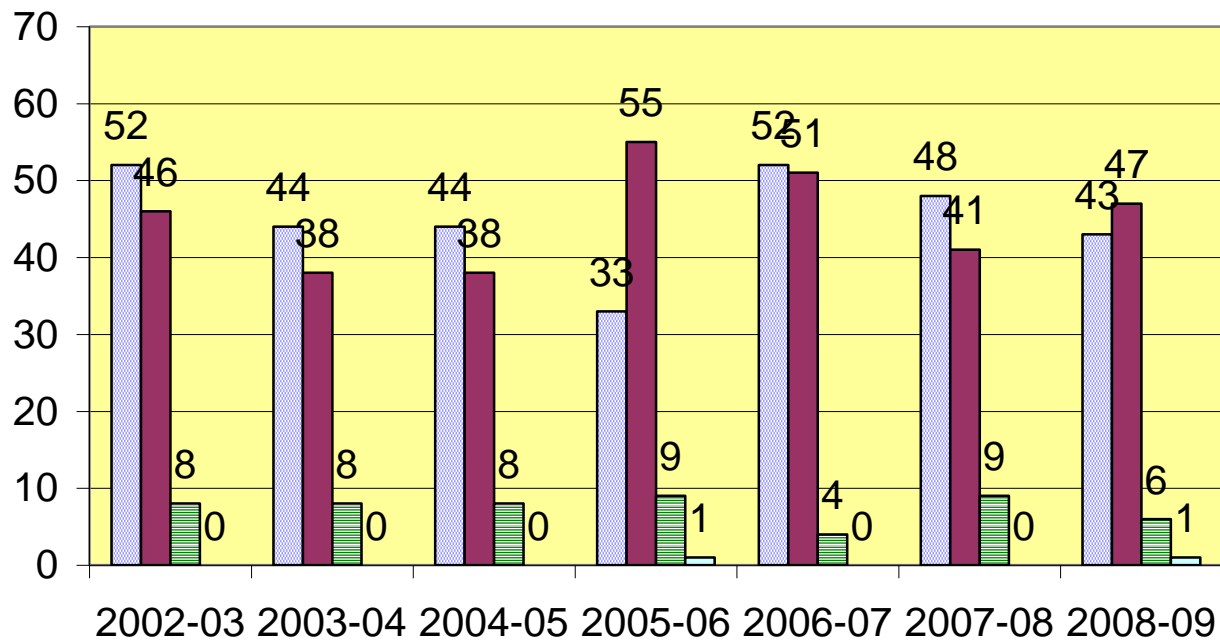
## New York State Assessments Grade 3-8 Mathematics 2008-2009



Student Performance Level	Grade 3		Grade 4		Grade 5		Grade 6		Grade 7		Grade 8	
	Count	Percentage	Count	Percentage	Count	Percentage	Count	Percentage	Count	Percentage	Count	Percentage
Level 4	21	26%	37	40%	34	35%	39	46%	44	44%	40	40%
Level 3	58	71%	44	48%	54	56%	42	49%	47	47%	51	52%
Level 2	3	4%	6	7%	7	7%	4	5%	6	6%	7	7%
Level 1	-	-	5	5%	2	2%	-	-	2	2%	1	1%
% Proficient	79	96%	81	88%	88	91%	81	95%	91	92%	91	92%
Students Tested	82		92		97		85		99		99	

*\*Percentage may not total 100 due to rounding.*

## New York State Assessments Grade 8 Science 2008-2009

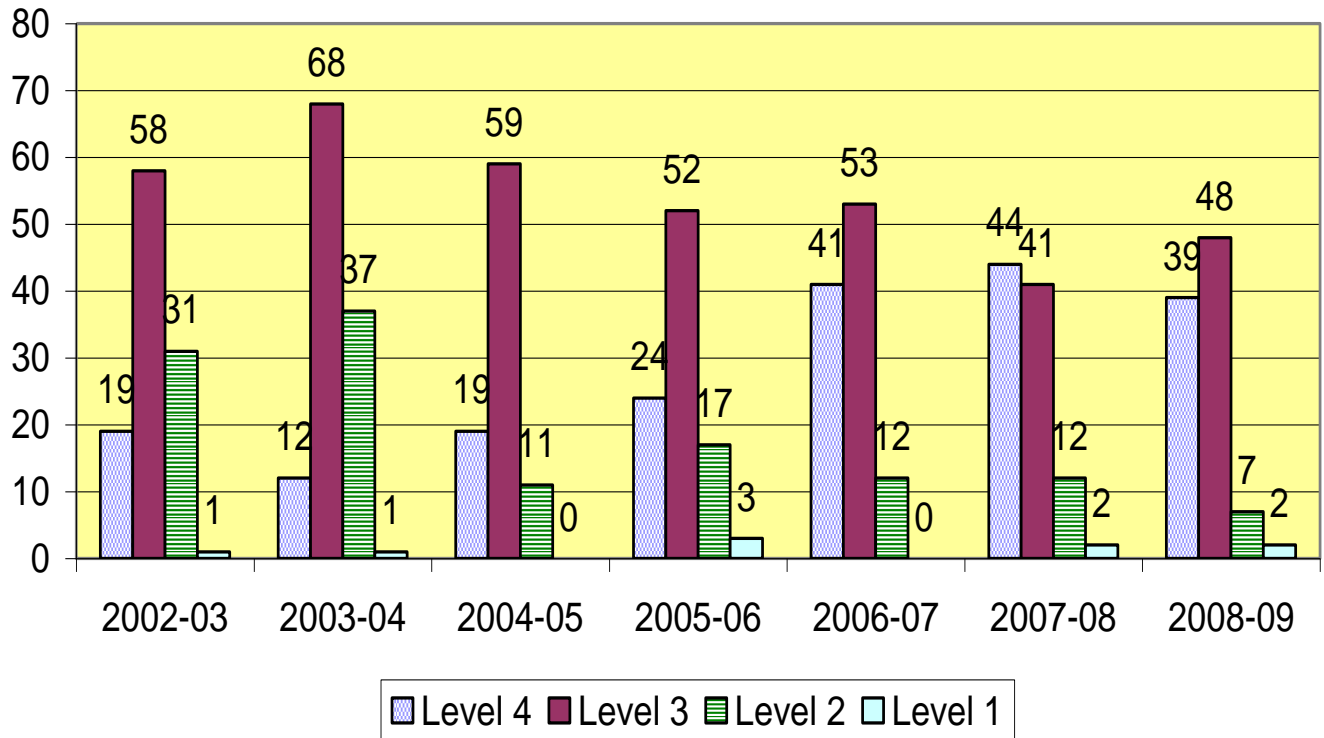


Level 4
  Level 3
  Level 2
  Level 1

Student Performance Level	2002-2003		2003-2004		2004-2005		2005-2006		2006-2007		2007-2008		2008-2009	
	Level 4	52	49%	44	37%	44	49%	33	34%	52	49%	48	49%	43
Level 3	46	43%	38	48%	38	42%	55	56%	51	48%	41	42%	47	48%
Level 2	8	8%	8	13%	8	9%	9	9%	4	3%	9	9%	6	6%
Level 1	0	0%	0	0%	0	0%	1	1%	0	0%	0	0%	1	1%
% Proficient Level 3 + 4	98	92%	82	85%	82	91%	88	90%	103	96%	89	91%	90	93%

*\*Percentage may not total 100 due to rounding.*

## New York State Assessments Grade 8 Social Studies 2008-2009



Student Performance Level	2002-2003		2003-2004		2004-2005		2005-2006		2006-2007		2007-2008		2008-2009	
Level 4	19	17%	12	10%	19	21%	24	25%	41	39%	44	44%	39	41%
Level 3	58	52%	68	58%	59	66%	52	54%	53	50%	41	41%	48	50%
Level 2	31	28%	37	31%	11	12%	17	18%	12	11%	12	12%	7	7%
Level 1	1	1%	1	1%	0	0%	3	3%	0	0%	2	2%	2	2%
% Proficient Level 3 + 4	77	69%	80	68%	78	87%	76	79%	94	89%	85	86%	87	91%

*\*Percentage may not total 100 due to rounding.*

# Grade 3-8 English Language Arts Results 2008-2009

## Results By Performance Level

The number of tested students and the percentage of all tested students performing in each level.

■ Level 3 and above

	Grade 3		Grade 4		Grade 5		Grade 6		Grade 7		Grade 8	
	#	%	#	%	#	%	#	%	#	%	#	%
<b>Level 4</b>	16	20%	10	11%	13	13%	4	5%	8	8%	6	6%
<b>Level 3</b>	53	65%	62	67%	79	81%	75	88%	82	81%	73	74%
<b>Level 2</b>	10	12%	18	20%	6	6%	6	7%	9	9%	18	18%
<b>Level 1</b>	2	2%	2	2%					2	2%	1	1%
<b>Total Tested</b>	81		92		98		85		101		98	

Percentages may not total 100 due to rounding.

## Results By Student Group

The number of tested students and the percentage of all tested students who scored at level 3 and above.

	Grade 3		Grade 4		Grade 5		Grade 6		Grade 7		Grade 8	
	#	%	#	%	#	%	#	%	#	%	#	%
All Students	81	85%	92	78%	98	94%	85	93%	101	89%	98	81%
General Education	74	91%	78	91%	88	98%	68	97%	86	98%	83	94%
Students with Disabilities	7	29%	14	7%	10	60%	17	76%	15	40%	15	7%
American Indian or Alaska Native												
Black or African American	4	S	3	S	2	S			1	S	1	S
Hispanic or Latino	2	S	4	S	4	S	6	S	5	40%	4	S
Asian or Pacific Islander	3	S	2	S	5	100%	3	S	3	S	3	S
White	72	83%	83	76%	87	94%	75	92%	91	92%	90	81%
Multiracial							1	S	1	S		
Small Group Totals (S)	9	100%	9	100%	6	83%	10	100%	5	80%	8	75%
Female	51	82%	44	77%	49	96%	43	95%	51	92%	46	85%
Male	30	90%	48	79%	49	92%	42	90%	50	86%	52	77%
English Proficient	80	-	92	78%	98	94%	85	93%	101	89%	98	81%
Limited English Proficient	1	-										
Economically Disadvantaged	11	82%	5	100%	8	100%	5	60%	5	80%	7	86%
Not Economically Disadvantaged	70	86%	87	77%	90	93%	80	95%	96	90%	91	80%
Migrant												
Not Migrant	81	85%	92	78%	98	94%	85	93%	101	89%	98	81%

Percentages may not total 100 due to rounding.

# Grade 3-8 Mathematics Results 2008-2009

## Results By Performance Level

The number of tested students and the percentage of all tested students performing in each level.

■ Level 3 and above

	Grade 3		Grade 4		Grade 5		Grade 6		Grade 7		Grade 8	
	#	%	#	%	#	%	#	%	#	%	#	%
<b>Level 4</b>	21	26%	37	40%	34	35%	39	46%	44	44%	40	40%
<b>Level 3</b>	58	71%	44	48%	54	56%	42	49%	47	47%	51	52%
<b>Level 2</b>	3	4%	6	7%	7	7%	4	5%	6	6%	7	7%
<b>Level 1</b>			5	5%	2	2%			2	2%	1	1%
<b>Total Tested</b>	82		92		97		85		99		99	

Percentages may not total 100 due to rounding.

## Results By Student Group

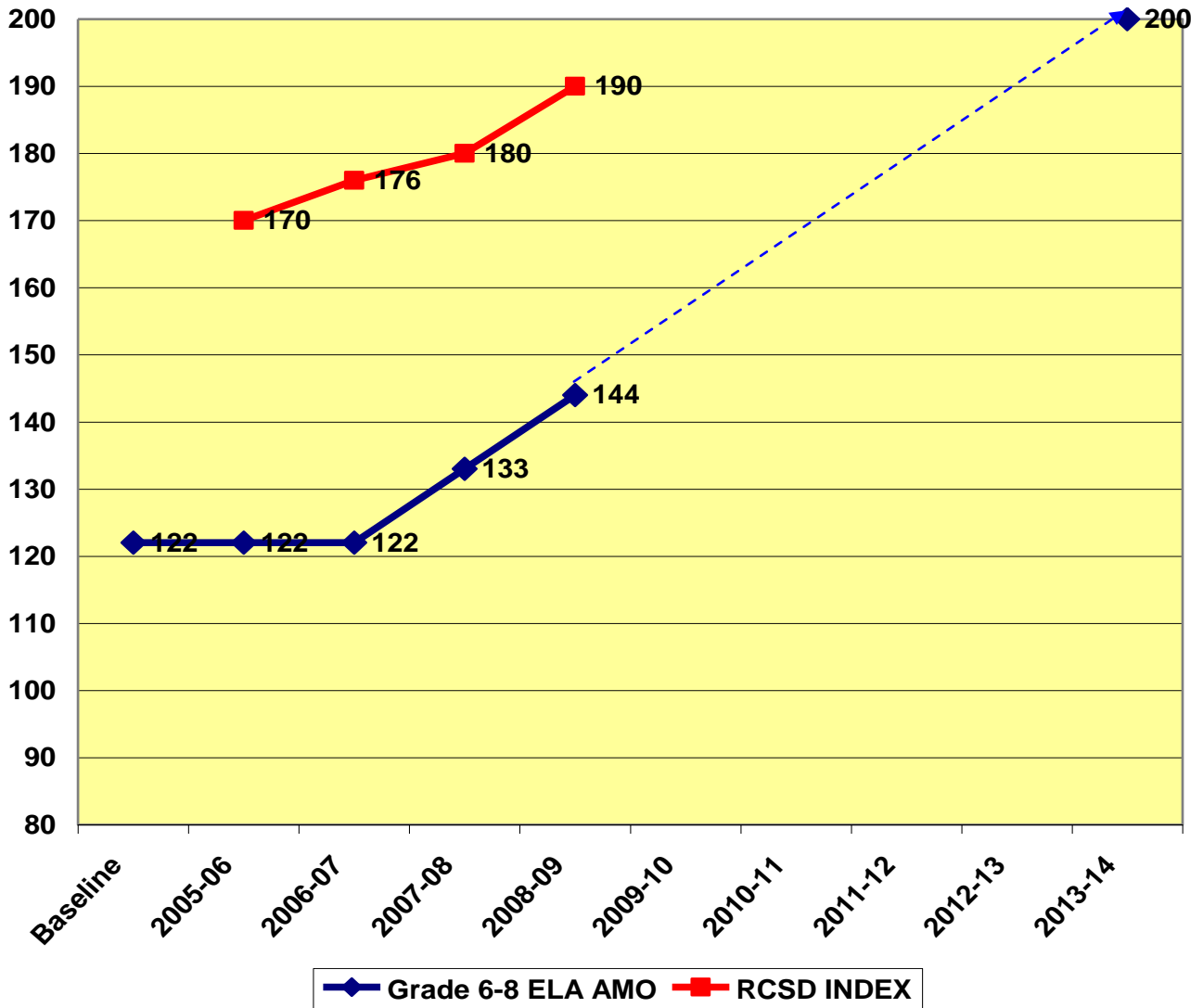
The number of tested students and the percentage of all tested students who scored at level 3 and above.

	Grade 3		Grade 4		Grade 5		Grade 6		Grade 7		Grade 8	
	#	%	#	%	#	%	#	%	#	%	#	%
All Students	82	96%	92	88%	97	91%	85	95%	99	92%	99	92%
General Education	75	99%	78	99%	87	95%	68	97%	84	100%	84	100%
Students with Disabilities	7	71%	14	29%	10	50%	17	88%	15	47%	15	47%
American Indian or Alaska Native												
Black or African American	4	S	3	S	2	S			1	S	1	S
Hispanic or Latino	2	S	4	S	4	S	6	S	5	S	4	S
Asian or Pacific Islander	3	S	2	S	5	100%	3	S	3	S	3	S
White	73	96%	83	87%	86	90%	75	96%	90	93%	91	92%
Multiracial							1	S				
Small Group Totals (S)	9	100%	9	100%	6	100%	10	90%	9	78%	8	88%
Female	52	94%	44	86%	49	90%	43	100%	51	92%	47	96%
Male	30	100%	48	90%	48	92%	42	90%	48	92%	52	88%
English Proficient	81	-	92	88%	97	91%	85	95%	99	92%	99	92%
Limited English Proficient	1	-										
Economically Disadvantaged	11	91%	5	100%	8	88%	5	100%	5	80%	7	100%
Not Economically Disadvantaged	71	97%	87	87%	89	91%	80	95%	94	93%	92	91%
Migrant												
Not Migrant	82	96%	92	88%	97	91%	85	95%	99	92%	99	92%

Percentages may not total 100 due to rounding.

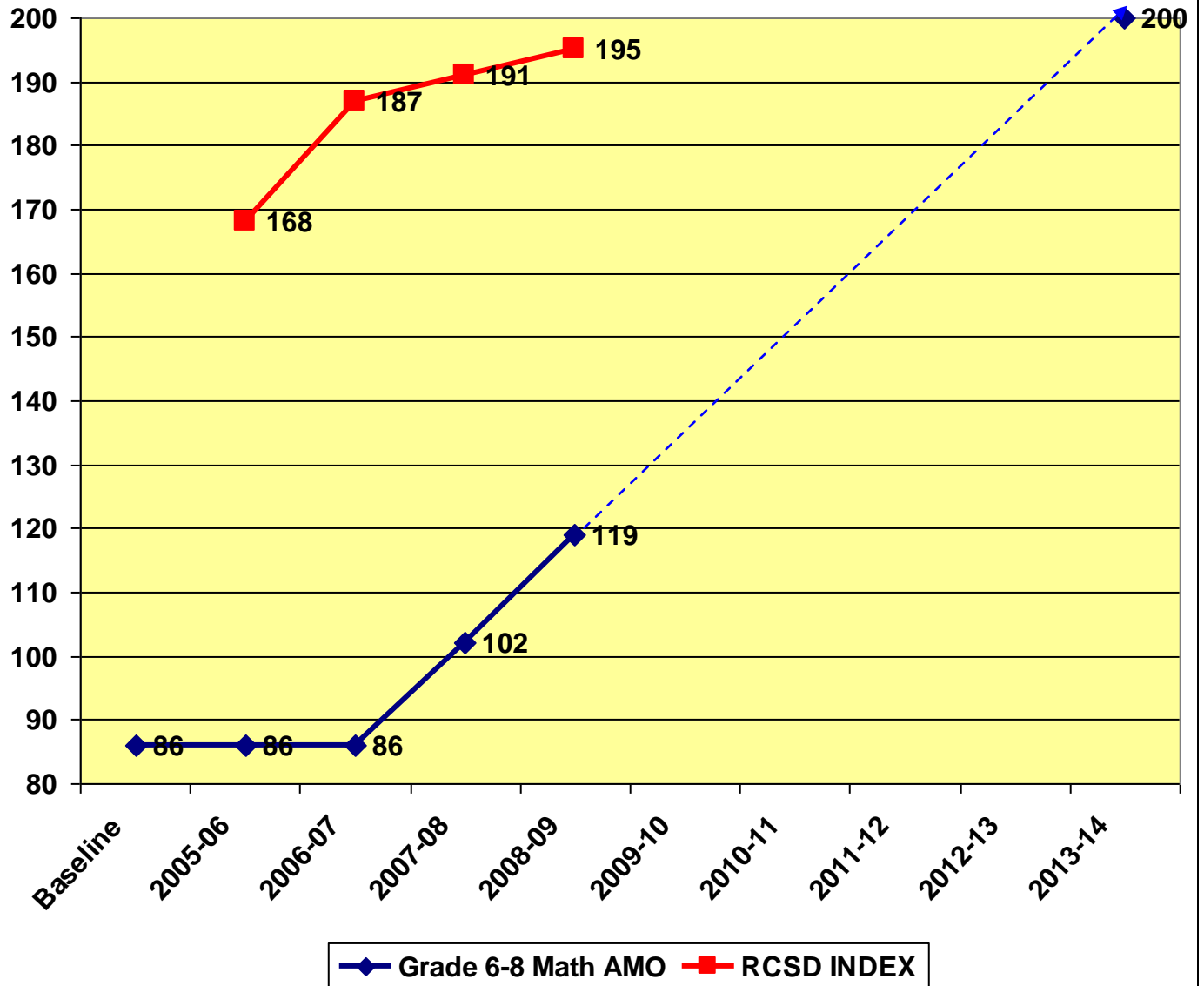
# Annual Measureable Objectives 2002-2003 to 2013-2014

## Annual Objectives Using Performance Index English Language Arts - Grade 6-8



Projected Grade 6-8 ELA AMO 

## Annual Objectives Using Performance Index Mathematics - Grade 6-8



**Projected Grade 6-8 Math AMO** ----->



**RHINEBECK HIGH SCHOOL  
STUDENT ACHIEVEMENT DATA**

**2008 - 2009**

## 2008-2009 Regents Exam Results

		All Students				General-Education Students				Students with Disabilities			
		Total Tested	Percentage of students scoring at or above:			Total Tested	Percentage of students scoring at or above:			Total Tested	Percentage of students scoring at or above:		
			55	65	85		55	65	85		55	65	85
<b>Comprehensive English</b>	2008-09	101	98%	98%	43%	95	98%	98%	44%	6	100%	100%	17%
	2007-08	91	98%	92%	42%	86	99%	97%	44%	5	80%	20%	0%
	2006-07	109	97%	94%	38%	105	-	-	-	4	-	-	-
<b>Mathematics A</b>	2008-09	5	100%	80%	0%	4	-	-	-	1	-	-	-
	2007-08	125	97%	95%	51%	117	97%	96%	54%	8	100%	88%	13%
	2006-07	105	100%	99%	63%	102	-	-	-	3	-	-	-
<b>Mathematics B</b>	2008-09	81	88%	78%	35%	81	88%	78%	35%	0			
	2007-08	66	88%	79%	26%	66	88%	79%	26%	0			
	2006-07	55	93%	84%	29%	55	93%	84%	29%	0			
<b>Integrated Algebra</b>	2008-09	93	99%	97%	41%	82	100%	98%	46%	11	91%	91%	0%
	2007-08	59	100%	100%	51%	58	-	-	-	1	-	-	-
	2006-07	N/A	N/A	N/A	N/A	N/A	N/A	N/A	N/A	N/A	N/A	N/A	N/A
<b>Geometry</b>	2008-09	64	100%	95%	50%	64	100%	95%	50%	0			
	2007-08	N/A	N/A	N/A	N/A	N/A	N/A	N/A	N/A	N/A	N/A	N/A	N/A
	2006-07	N/A	N/A	N/A	N/A	N/A	N/A	N/A	N/A	N/A	N/A	N/A	N/A
<b>Global History and Geography</b>	2008-09	112	96%	92%	52%	100	96%	94%	56%	12	92%	75%	17%
	2007-08	99	98%	92%	48%	93	98%	94%	51%	6	100%	67%	17%
	2006-07	96	97%	93%	43%	92	-	-	-	4	-	-	-
<b>U.S. History and Government</b>	2008-09	97	98%	94%	53%	91	99%	96%	56%	6	83%	67%	0%
	2007-08	90	99%	99%	62%	85	99%	99%	65%	5	100%	100%	20%
	2006-07	110	100%	93%	58%	105	100%	93%	59%	5	100%	80%	40%
<b>Living Environment</b>	2008-09	111	99%	96%	59%	98	99%	96%	65%	13	100%	100%	15%
	2007-08	93	100%	100%	56%	89	-	-	-	4	-	-	-
	2006-07	96	100%	97%	45%	91	100%	97%	47%	5	100%	100%	0%
<b>Physical Setting/Earth Science</b>	2008-09	90	99%	88%	44%	82	100%	90%	49%	8	88%	63%	0%
	2007-08	98	99%	94%	42%	87	99%	93%	47%	11	100%	100%	0%
	2006-07	85	100%	89%	34%	82	-	-	-	3	-	-	-
<b>Physical Setting/Chemistry</b>	2008-09	46	98%	89%	28%	46	98%	89%	28%	0			
	2007-08	49	100%	100%	24%	49	100%	100%	24%	0			
	2006-07	58	100%	97%	19%	58	100%	97%	19%	0			
<b>Physical Setting/Physics</b>	2008-09	34	100%	94%	47%	34	100%	94%	47%	0			
	2007-08	52	96%	88%	44%	52	96%	88%	44%	0			
	2006-07	48	98%	94%	42%	47	-	-	-	1	-	-	-
<b>Comprehensive French</b>	2008-09	16	100%	100%	100%	16	100%	100%	100%	0			
	2007-08	10	100%	100%	100%	10	100%	100%	100%	0			
	2006-07	46	98%	96%	87%	45	-	-	-	1	-	-	-
<b>Comprehensive Latin</b>	2008-09	0				0				0			
	2007-08	16	100%	100%	100%	16	100%	100%	100%	0			
	2006-07	22	86%	82%	27%	22	86%	82%	27%	0			
<b>Comprehensive Spanish</b>	2008-09	38	100%	100%	97%	38	100%	100%	97%	0			
	2007-08	70	100%	96%	80%	69	-	-	-	1	-	-	-
	2006-07	31	100%	100%	97%	31	100%	100%	97%	0			

# 2005 Total Cohort Performance on Regents Exams After Four Years

## English Language Arts Results

Results by Student Group	2005 Cohort			
	Number of Students	Percentage scoring at level(s):		
		2-4	3-4	4
<b>All Students</b>	<b>93</b>	<b>89%</b>	<b>87%</b>	<b>42%</b>
Female	40	93%	90%	65%
Male	53	87%	85%	25%
American Indian or Alaska Native				
Black or African American	1	-	-	-
Hispanic or Latino	4	-	-	-
Asian or Native Hawaiian/Other				
Pacific Islander	1	-	-	-
White	87	91%	90%	45%
Multiracial				
Small Group Totals	6	67%	50%	0%
General-Education Students	86	92%	91%	44%
Students with Disabilities	7	57%	43%	14%
English Proficient	93	89%	87%	42%
Limited English Proficient				
Economically Disadvantaged	2	-	-	-
Not Disadvantaged	91	-	-	-
Migrant				
Not Migrant	93	89%	87%	42%

### NOTES

The - symbol indicates that data for a group of students have been suppressed. If a group has fewer than five students, data for that group and the next smallest group(s) are suppressed to protect the privacy of individual students.

Other Assessments	2005 Cohort			
	Number of Students	Number scoring at level(s):		
		2-4	3-4	4
New York State Alternate Assessment (NYSAA): High School Equivalent ***				

# Mathematics Results

Results by Student Group	2005 Cohort			
	Number of Students	Percentage scoring at level(s):		
		2-4	3-4	4
<b>All Students</b>	<b>93</b>	<b>92%</b>	<b>91%</b>	<b>61%</b>
Female	40	95%	93%	63%
Male	53	91%	91%	60%
American Indian or Alaska Native				
Black or African American	1	-	-	-
Hispanic or Latino	4	-	-	-
Asian or Native Hawaiian/Other Pacific Islander	1	-	-	-
White	87	92%	92%	63%
Multiracial				
Small Group Totals	6	100%	83%	33%
General-Education Students	86	94%	93%	65%
Students with Disabilities	7	71%	71%	14%
English Proficient	93	92%	91%	61%
Limited English Proficient				
Economically Disadvantaged	2	-	-	-
Not Disadvantaged	91	-	-	-
Migrant				
Not Migrant	93	92%	91%	61%

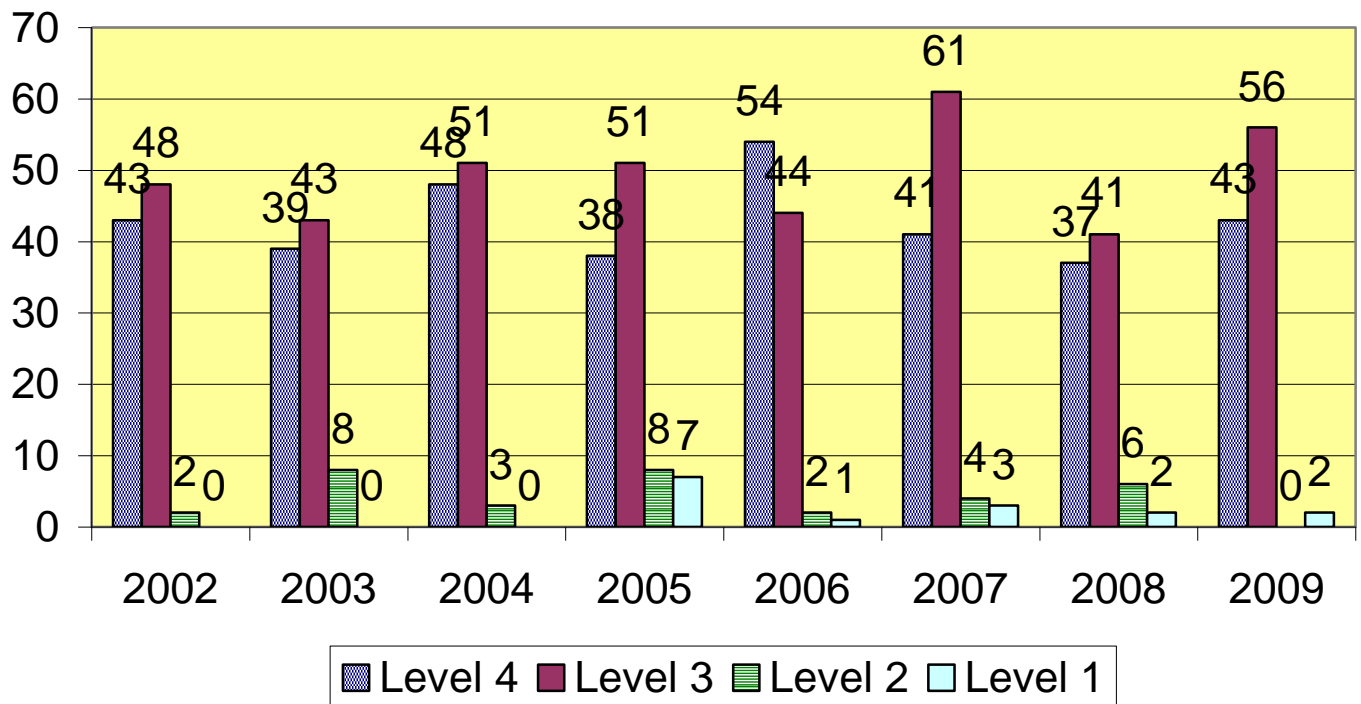
**NOTES**  
The - symbol indicates that data for a group of students have been suppressed. If a group has fewer than five students, data for that group and the next smallest group(s) are suppressed to protect the privacy of individual students.

Other Assessments	2005 Cohort			
	Number of Students	Number scoring at level(s):		
		2-4	3-4	4
New York State Alternate Assessment (NYSAA): High School Equivalent ***				

# Social Studies and Science Results

	All Students				General-Education Students				Students with Disabilities			
	Cohort Enrollment	Percentage of students scoring:			Cohort Enrollment	Percentage of students scoring:			Cohort Enrollment	Percentage of students scoring:		
		55-64	65-84	85-100		55-64	65-84	85-100		55-64	65-84	85-100
<b>Global History and Geography</b>	91	2%	47%	43%	85	1%	47%	46%	6	17%	50%	0%
<b>U.S. History and Government</b>	91	1%	32%	62%	85	0%	31%	65%	6	17%	50%	17%
<b>Science</b>	91	3%	33%	58%	85	4%	32%	61%	6	0%	50%	17%

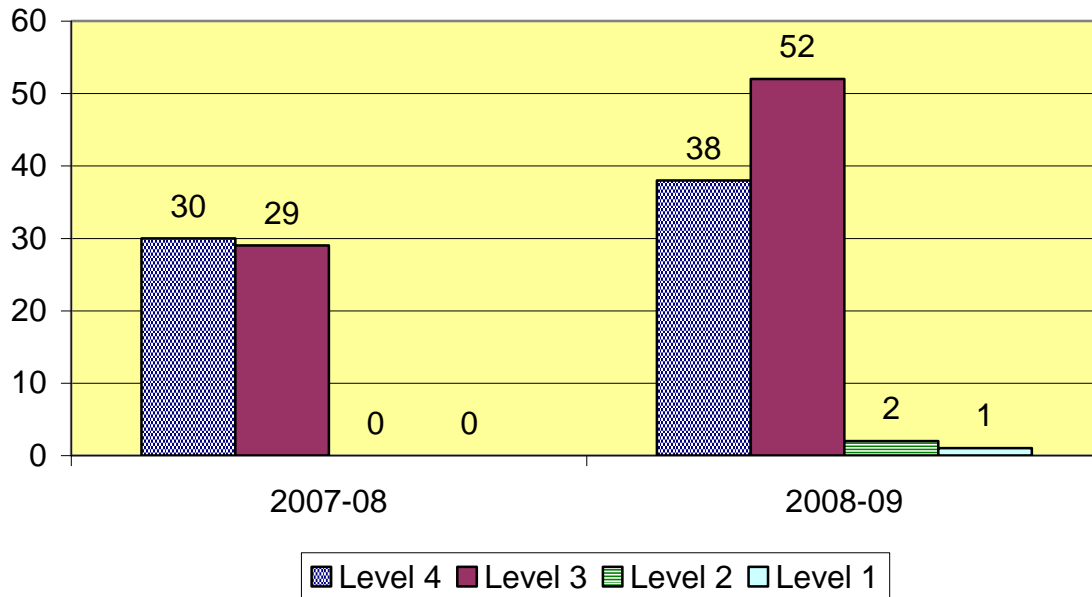
## New York State Assessments English Language Arts Regents 2009



Student Performance Level	2001-2002		2002-2003		2003-2004		2004-2005		2005-2006		2006-2007		2007-2008		2008-2009	
	Level 4 85-100	43	41%	39	39%	48	47%	38	37%	54	53%	41	38%	37	43%	43
Level 3 65-84	48	56%	43	43%	51	50%	51	49%	44	44%	61	56%	41	48%	56	55%
Level 2 55-64	2	2%	8	8%	3	3%	8	8%	2	2%	4	4%	6	7%	0	0%
Level 1 0-54	0	0%	0	0%	0	0%	7	6%	1	1%	3	3%	2	2%	2	2%
% Proficient Level 3+4	91	97%	82	82%	99	97%	89	86%	98	97%	102	94%	78	91%	99	98%

\*Percentage may not total 100 due to rounding.

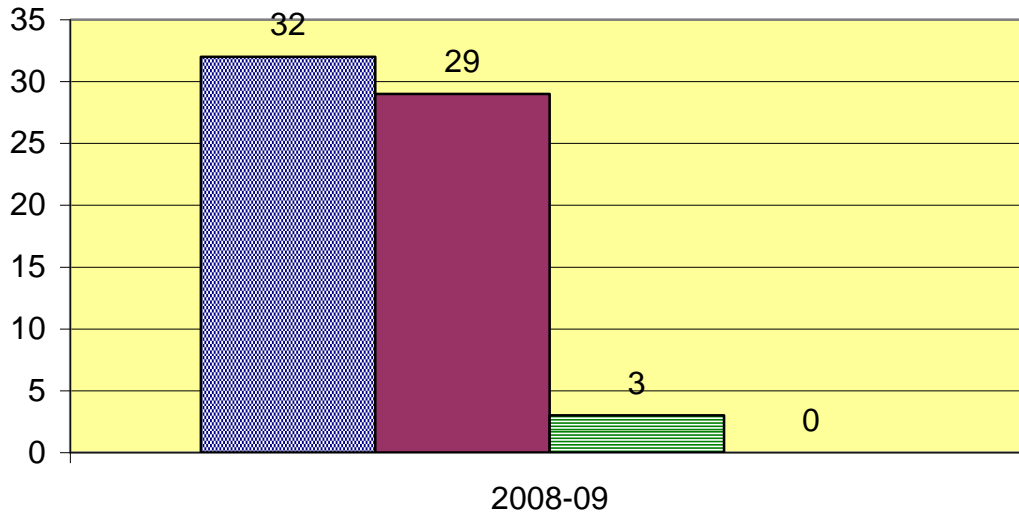
# New York State Assessments Mathematics Integrated Algebra Regents 2009



Student Performance Level	2007-2008		2008-2009	
	Count	Percentage	Count	Percentage
<b>Level 4 85-100</b>	30	51%	38	41%
<b>Level 3 65-84</b>	29	49%	52	56%
<b>Level 2 55-64</b>	0	0%	2	2%
<b>Level 1 0-54</b>	0	0%	1	1%
<b>% Proficient Level 3+4</b>	59	100%	90	97%

*\*Percentage may not total 100 due to rounding.  
Figures include 8<sup>th</sup> grade students*

# New York State Assessments Mathematics Geometry Regents 2009



Level 4
  Level 3
  Level 2
  Level 1

Student Performance Level	2008-2009	
Level 4 85-100	32	50%
Level 3 65-84	29	45%
Level 2 55-64	3	5%
Level 1 0-54	0	0
% Proficient Level 3+4	64	95%

*\*Percentage may not total 100 due to rounding.*

## Rhinebeck High School Mean SAT Scores

	2003		2004		2005		2006			2007			2008			2009		
	V	M	V	M	V	M	CR	M	WR	CR	M	WR	CR	M	WR	CR	M	WR
<b>Rhinebeck</b>	551	549	548	544	581	572	556	548	547	576	557	549	551	559	543	553	549	526
<b>NY State</b>	496	510	497	510	497	511	493	510	483	491	505	482	488	504	481	485	502	478
<b>National</b>	507	519	508	518	508	520	503	518	497	502	515	494	502	515	494	501	515	493

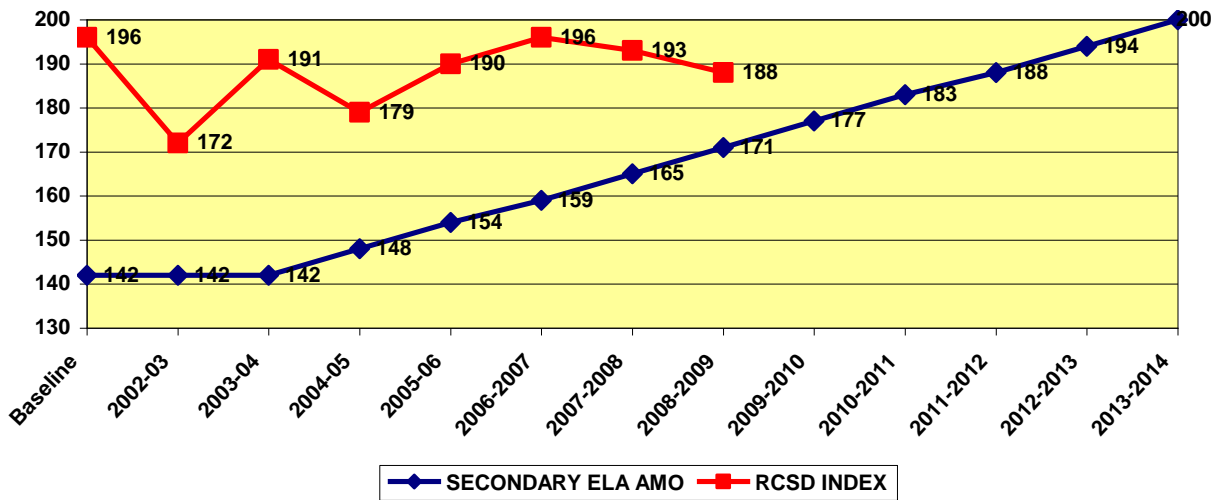
## Rhinebeck High School AP Exam Results 2009

AP Grade	Biology	Calc AB	Chem	Comp Science A	ELA/Comp	European History	French	Physics C Mech	Spanish	World History	Total Grades	Total Percentages
5	9	4	-	-	3	1	-	3	2	9	31	30
4	5	3	-	-	5	1	-	2	5	8	29	28
3	1	1	-	-	-	2	3	2	2	10	21	20
2	3	2	-	-	1	4	3	2	-	2	17	16
1	1	2	1	-	-	-	2	-	1	-	7	7
<b>Total</b>	<b>19</b>	<b>12</b>	<b>1</b>	<b>0</b>	<b>9</b>	<b>8</b>	<b>8</b>	<b>9</b>	<b>10</b>	<b>29</b>	<b>105</b>	<b>100</b>

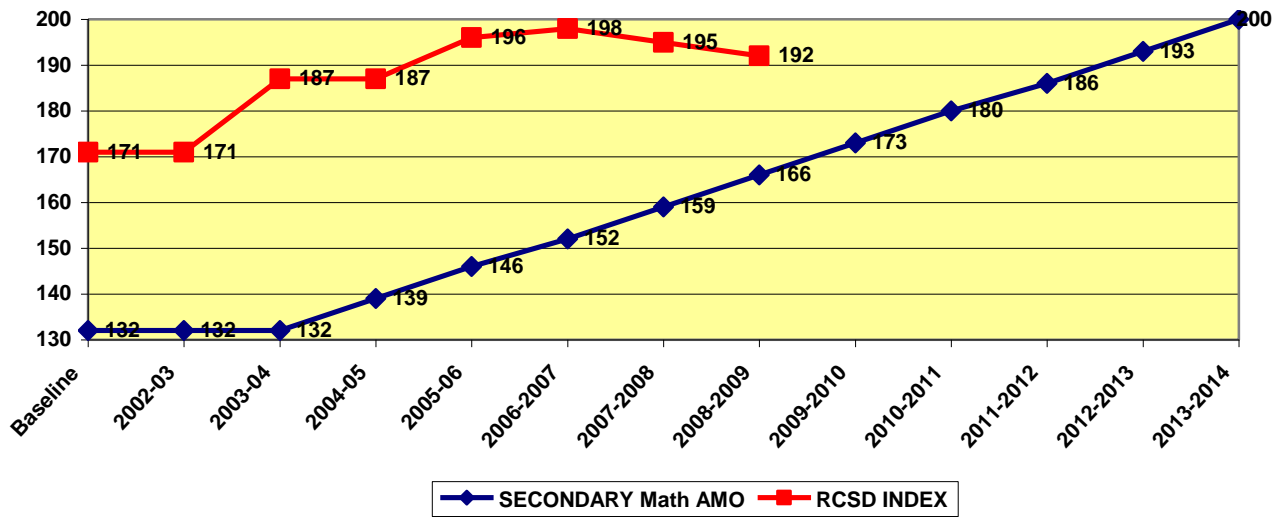


# Annual Measureable Objectives 2002-2003 to 2013-2014

## Annual Objectives Using Performance Index Secondary English Language Arts



## Annual Objectives Using Performance Index Secondary Mathematics



## RCT and Second Language Proficiency 2008-2009

<i>Examination</i>	<i>Student Group</i>	<i>Count of Students Tested</i>	<i>Number of Students Passing</i>	<i>Percent of Students Passing</i>
<b>RCT Reading</b>	All Students	3	*	*
	General Education	0	0	0%
	Students with Disabilities	3	*	*
<b>RCT Writing</b>	All Students	4	*	*
	General Education	0	0	0%
	Students with Disabilities	4	*	*
<b>RCT Mathematics</b>	All Students	0	0	0%
	General Education	0	0	0%
	Students with Disabilities	0	0	0%
<b>RCT Science</b>	All Students	0	0	0%
	General Education	0	0	0%
	Students with Disabilities	0	0	0%
<b>RCT Global Studies</b>	All Students	0	0	0%
	General Education	0	0	0%
	Students with Disabilities	0	0	0%
<b>RCT U.S. History and Government</b>	All Students	0	0	0%
	General Education	0	0	0%
	Students with Disabilities	0	0	0%
<b>Second Language Proficiency French</b>	All Students	29	29	100%
	General Education	29	29	100%
	Students with Disabilities	0	0	0%
<b>Second Language Proficiency Latin</b>	All Students	13	*	92%
	General Education	13	*	92%
	Students with Disabilities	0	0	0%
<b>Second Language Proficiency Spanish</b>	All Students	43	*	95%
	General Education	42	*	*
	Students with Disabilities	1	*	*

\*NYSTART suppressed data to protect identity of students if group has less than 5 students