

RHINEBECK CENTRAL SCHOOL DISTRICT

STUDENT ACHIEVEMENT DATA REPORT
May 2009



PREPARED BY
MARVIN KREPS
Director of Curriculum and Instruction

Table of Contents

CHANCELLOR LIVINGSTON ELEMENTARY SCHOOL	3
Elementary Percent Proficient	4
2007-08 Grade 3-8 English Language Arts	5
2008-09 Grade 3-8 English Language Arts	6
2007-2008 ELA General Education/Special Education Student Achievement Comparison	7
2008-2009 ELA General Education/Special Education Student Achievement Comparison	7
Grade 3-8 Mathematics	8
2007-2008 Math General Education/Special Education Student Achievement Comparison.....	9
Grade 4 Science	10
Grade 5 Social Studies	11
Grade 3-8 English Language Arts Results	12
Results by Performance Level.....	12
Results by Student Group.....	12
Grade 3-8 Mathematics Results	13
Results by Performance Level.....	13
Results by Student Group.....	13
2002-2003 to 2013-2014 Annual Measureable Objectives	14
Grade 3-5 English Language Arts	14
Grade 3-5 Mathematics	15
BULKELEY MIDDLE SCHOOL	16
Middle School Percent Proficient	17
2007-08 Grade 3-8 English Language Arts	18
2008-09 Grade 3-8 English Language Arts	19
Grades 3-8 Mathematics	20
Grade 8 Science	21
Grade 8 Social Studies	22
Grade 3-8 English Language Arts Results	23
Results by Performance Level.....	23
Results by Student Group.....	23
Grade 3-8 Mathematics Results	24
Results by Performance Level.....	24
Results by Student Group.....	24
2002-2003 to 2013-2014 Annual Measureable Objectives	25
English Language Arts - Grade 6-8.....	25
Mathematics - Grade 6-8.....	26
RHINEBECK HIGH SCHOOL	27
2007-2008 Regents Exam Results	28
2004 Total Cohort Performance on Regents Exams	29
English Language Arts Results	29
Mathematics Results.....	30
Social Studies and Science Results	30
English Language Arts Regents	31
Mathematics A Regents	32
Rhinebeck High School Mean SAT Scores	33
Rhinebeck High School AP Exam Results	33
2002-2003 to 2013-2014 Annual Measureable Objectives	34
Secondary English Language Arts	34
Secondary Mathematics.....	35
RCT and Second Language Proficiency	36

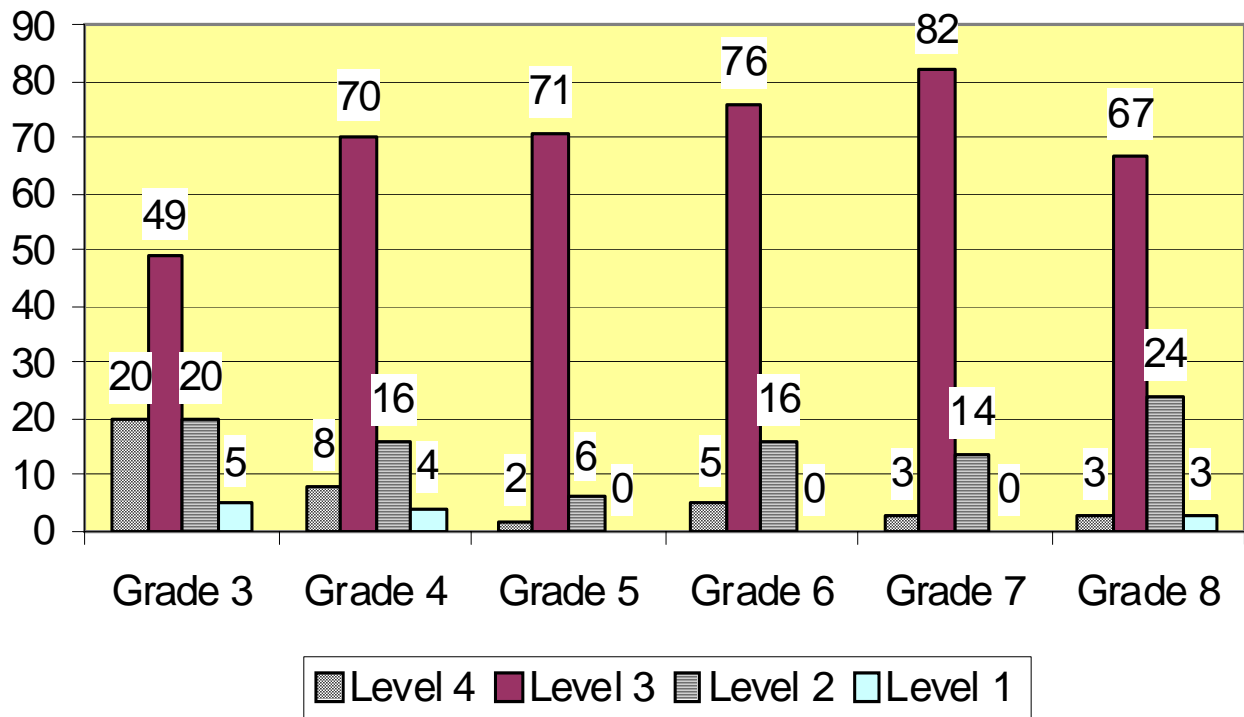
**CHANCELLOR LIVINGSTON
ELEMENTARY SCHOOL
STUDENT ACHIEVEMENT DATA**

2007 - 2008

New York State Assessments Elementary Percent Proficient 2007-08

	2001-2002	2002-2003	2003-2004	2004-2005	2005-2006	2006-2007	2007-2008	2008-2009
English Language Arts	63%	80%	68%	78%	3: 73% 4: 80% 5: 79%	3: 82% 4: 82% 5: 82%	3: 73% 4: 80% 5: 92%	3: 85% 4: 78% 5: 94%
Math	62%	88%	84%	91%	3: 88% 4: 85% 5: 73%	3: 93% 4: 92% 5: 79%	3: 92% 4: 90% 5: 92%	3: 96% 4: 88% 5: 91%
Science Grade 4	97%	92%	81%	82%	95%	99%	97%	96%
Social Studies Grade 5	99%	88%	86%	86%	94%	91%	95%	94%

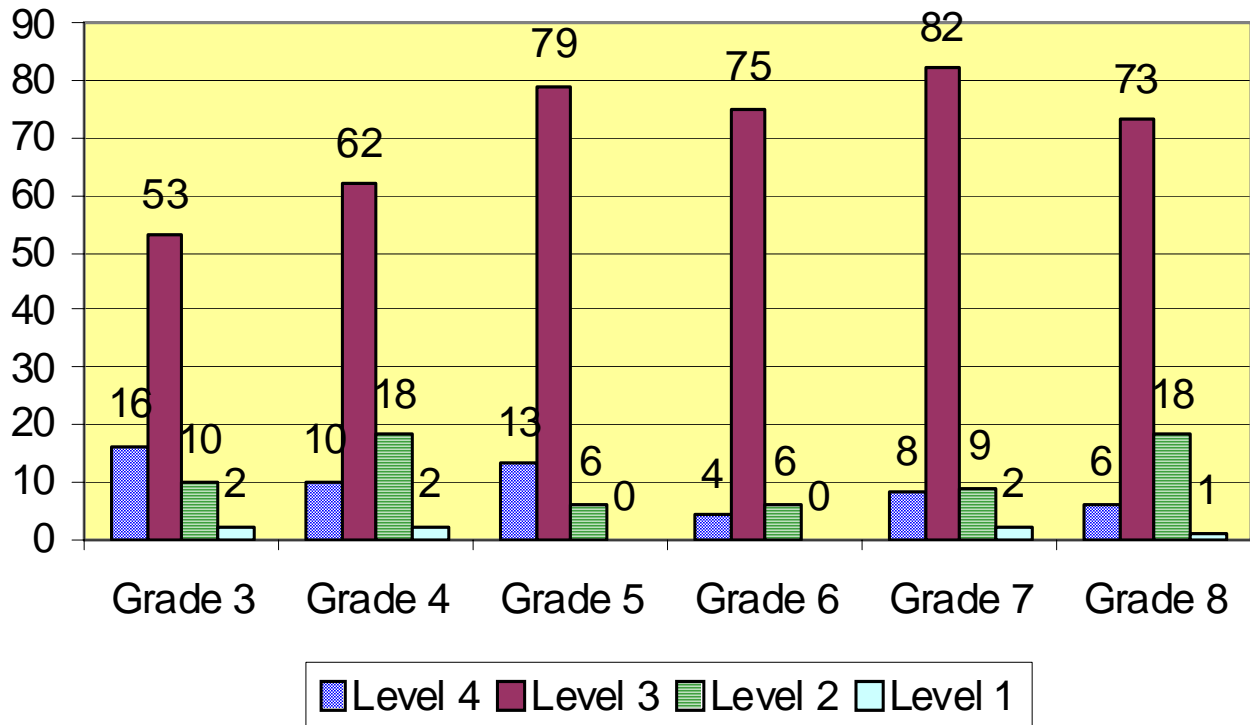
New York State Assessments Grade 3-8 English Language Arts 2007-2008



Student Performance Level	Grade 3		Grade 4		Grade 5		Grade 6		Grade 7		Grade 8	
	Level 4	20	21%	8	8%	2	3%	5	5%	3	3%	3
Level 3	49	52%	70	71%	71	90%	76	78%	82	83%	67	69%
Level 2	20	21%	16	16%	6	8%	16	16%	14	14%	24	25%
Level 1	5	5%	4	4%	0	0	0	0	0	0	3	3%
% Proficient	69	73%	78	80%	73	92%	81	84%	85	86%	70	72%
Students Tested	94		98		79		97		99		97	

**Percentage may not total 100 due to rounding.*

New York State Assessments Grade 3-8 English Language Arts 2008-2009



Student Performance Level	Grade 3		Grade 4		Grade 5		Grade 6		Grade 7		Grade 8	
Level 4	16	20%	10	11%	13	13%	4	5%	8	8%	6	6%
Level 3	53	65%	62	67%	79	81%	75	88%	82	81%	73	74%
Level 2	10	12%	18	20%	6	6%	6	7%	9	9%	18	18%
Level 1	2	2%	2	2%	0	0%	0	0%	2	2%	1	1%
% Proficient	85%		78%		94%		93%		89%		81%	
Students Tested	81		92		98		85		101		98	

**Percentage may not total 100 due to rounding.*

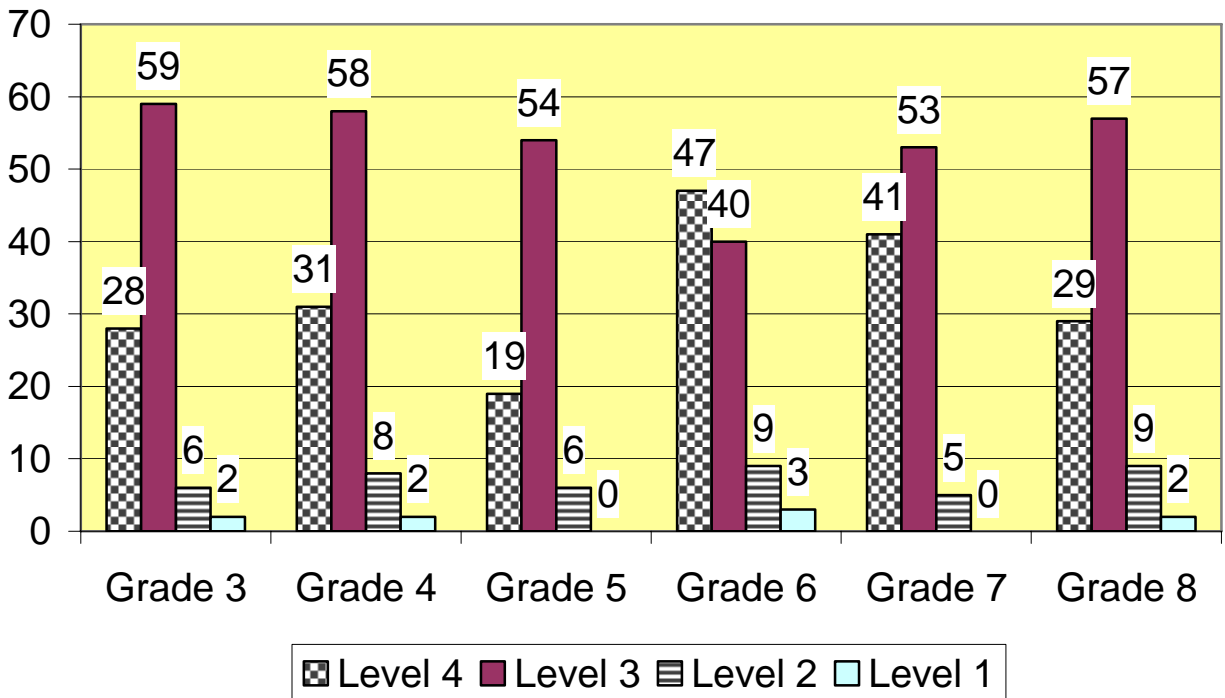
**2007-2008 ELA General Education/Special Education Student
Achievement Comparison**

	Proficiency Totals All Students	General Education Only	Special Education Only
Grade 3	94 students/73%	81 students/81%	13 students/23%
Grade 4	98 students/80%	88 students/84%	10 students/40%
Grade 5	79 students/92%	68 students/97%	11 students/64%
Grade 6	97 students/84%	87 students/90%	10 students/30%
Grade 7	99 students/86%	88 students/94%	11 students/18%
Grade 8	97 students/72%	85 students/81%	12 students/8%

**2008-2009 ELA General Education/Special Education Student
Achievement Comparison**

	Proficiency Totals All Students	General Education Only	Special Education Only
Grade 3	81 students/85%	74 students/91%	7 students/29%
Grade 4	92 students/78%	78 students/91%	14 students/7%
Grade 5	98 students/94%	88 students/98%	10 students/60%
Grade 6	85 students/93%	68 students/97%	17 students/76%
Grade 7	101 students/89%	86 students/98%	15 students/40%
Grade 8	98 students/81%	83 students/94%	15 students/7%

New York State Assessments Grade 3-8 Mathematics 2007-2008



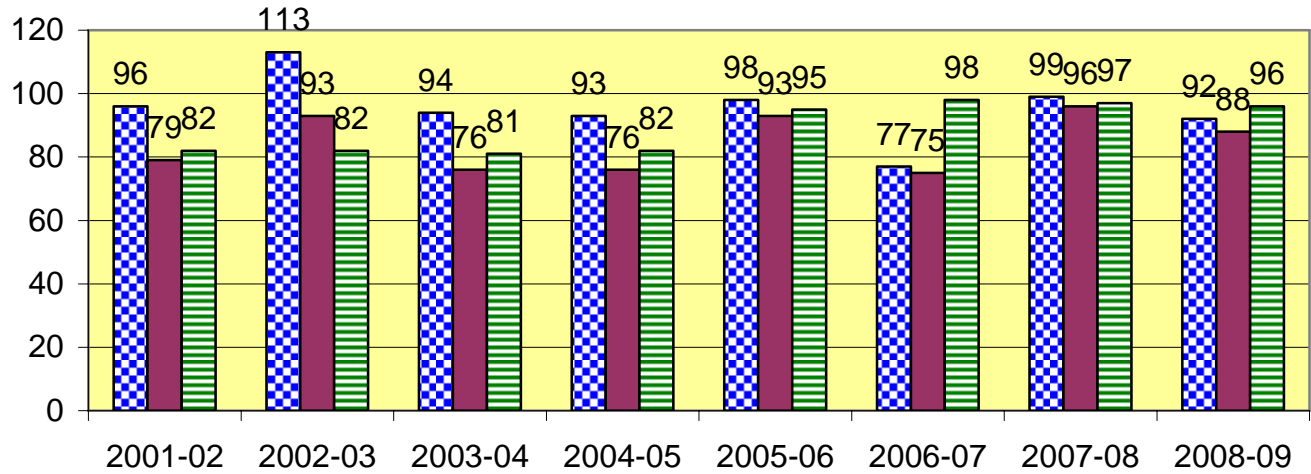
Student Performance Level	Grade 3		Grade 4		Grade 5		Grade 6		Grade 7		Grade 8	
Level 4	28	29%	31	31%	19	24%	47	47%	41	41%	29	30%
Level 3	59	62%	58	59%	54	68%	40	40%	53	54%	57	59%
Level 2	6	6%	8	8%	6	8%	9	9%	5	5%	9	9%
Level 1	2	2%	2	2%	0	0	3	3%	0	0	2	2%
% Proficient	87	92%	89	90%	73	92%	87	88%	94	95%	86	89%
Students Tested	95		99		79		99		99		97	

**Percentage may not total 100 due to rounding.*

**2007-2008 Math General Education/Special Education Student
Achievement Comparison**

	Proficiency Totals All Students	General Education Only	Special Education Only
Grade 3	95 students/92%	82 students/99%	13 students/46%
Grade 4	99 students/90%	88 students/94%	11 students/55%
Grade 5	79 students/92%	68 students/97%	11 students/64%
Grade 6	99 students/88%	89 students/94%	10 students/30%
Grade 7	99 students/95%	88 students/100%	11 students/55%
Grade 8	97 students/89%	85 students/96%	12 students/33%

New York State Assessments Grade 4 Science 2007-2008

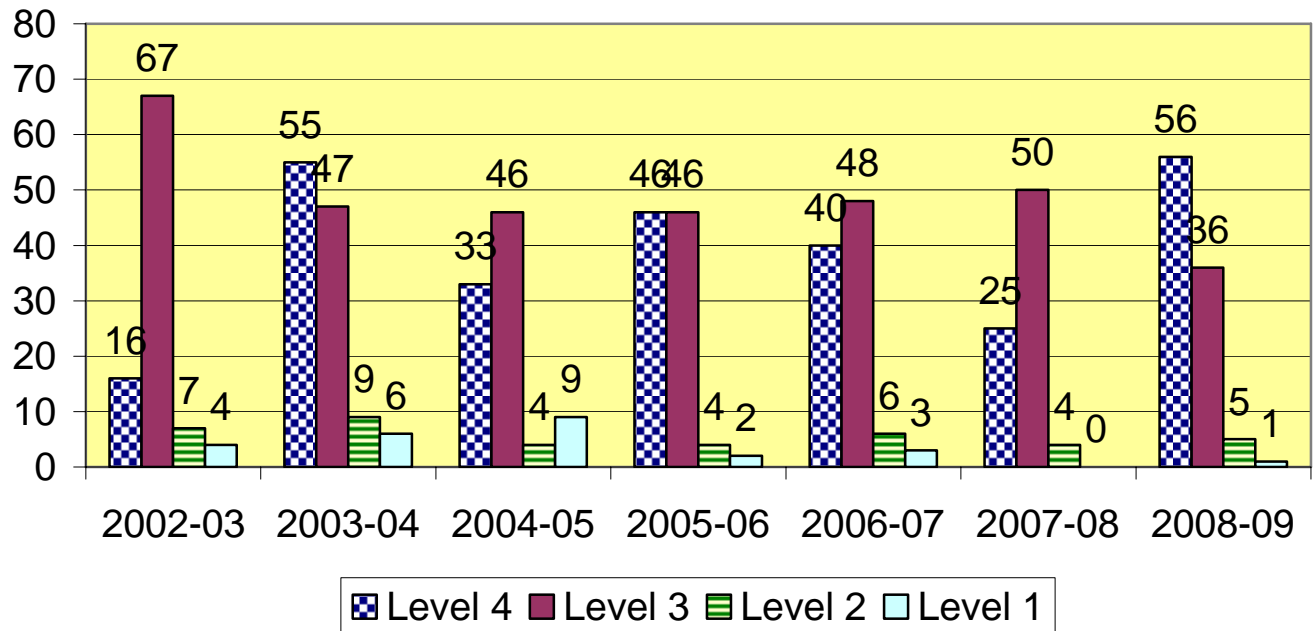


■ Number of Students Tested
 ■ Number of Students Proficient
 ■ Percent of Students Proficient

	2001-2002	2002-2003	2003-2004	2004-2005	2005-2006	2006-2007	2007-2008	2008-2009
Number of Students Tested	96	113	94	93	98	77	99	92
Number of Students Proficient	79	93	76	76	93	75	96	88
Percent of Students Proficient	82%	82%	81%	82%	95%	98%	97%	96%

**Percentage may not total 100 due to rounding.*

New York State Assessments Grade 5 Social Studies 2007 - 2008



Student Performance Level	2002-2003		2003-2004		2004-2005		2005-2006		2006-2007		2007-2008		2008-2009	
Level 4	16	17%	55	46%	33	36%	46	47%	40	41%	25	32%	56	57%
Level 3	67	71%	47	40%	46	50%	46	47%	48	49%	50	63%	36	37%
Level 2	7	7%	9	8%	4	4%	4	4%	6	7%	4	5%	5	5%
Level 1	4	4%	6	5%	9	10%	2	2%	3	3%	0	0%	1	1%
% Proficient (level 3 + 4)	83	88%	102	86%	79	86%	92	94%	88	91%	79	95%	92	94%

**Percentage may not total 100 due to rounding.*

Grade 3-8 English Language Arts Results 2007-2008

Results By Performance Level

The number of tested students and the percentage of all tested students performing in each level.

■ Level 3 and above

	Grade 3		Grade 4		Grade 5		Grade 6		Grade 7		Grade 8	
	#	%	#	%	#	%	#	%	#	%	#	%
Level 4	20	21%	8	8%	2	3%	5	5%	3	3%	3	3%
Level 3	49	52%	70	71%	71	90%	76	78%	82	83%	67	69%
Level 2	20	21%	16	16%	6	8%	16	16%	14	14%	24	25%
Level 1	5	5%	4	4%							3	3%
Total Tested	94		98		79		97		99		97	

Percentages may not total 100 due to rounding.

Results By Student Group

The number of tested students and the percentage of all tested students who scored at level 3 and above.

	Grade 3		Grade 4		Grade 5		Grade 6		Grade 7		Grade 8	
	#	%	#	%	#	%	#	%	#	%	#	%
All Students	94	73%	98	80%	79	92%	97	84%	99	86%	97	72%
General Education	81	81%	88	84%	68	97%	87	90%	88	94%	85	81%
Students with Disabilities	13	23%	10	40%	11	64%	10	30%	11	18%	12	8%
American Indian or Alaska Native												
Black or African American	2	5	2	5			1	5	1	5	1	5
Hispanic or Latino	4	5	4	5	5	5	4	5	2	5	2	5
Asian or Pacific Islander	3	5	5	80%	2	5	3	5	2	5	6	5
White	85	72%	87	79%	72	92%	89	84%	94	86%	88	69%
Multiracial												
Small Group Totals (S)	9	89%	6	83%	7	100%	8	75%	5	80%	9	100%
Female	43	70%	54	83%	40	95%	48	92%	48	90%	45	84%
Male	51	76%	44	75%	39	90%	49	76%	51	82%	52	62%
English Proficient	94	73%	98	80%	79	92%	96	-	99	86%	97	72%
Limited English Proficient							1	-				
Economically Disadvantaged			6	100%	5	80%	3	-	5	60%	4	-
Not Economically Disadvantaged	94	73%	92	78%	74	93%	94	-	94	87%	93	-
Migrant												
Not Migrant												

Percentages may not total 100 due to rounding.

These calculations are based on all tested students. Accountability decisions are based on continuously enrolled students.

Grade 3-8 Mathematics Results 2007-2008

Results By Performance Level

The number of tested students and the percentage of all tested students performing in each level.

■ Level 3 and above

	Grade 3		Grade 4		Grade 5		Grade 6		Grade 7		Grade 8	
	#	%	#	%	#	%	#	%	#	%	#	%
Level 4	28	29%	31	31%	19	24%	47	47%	41	41%	29	30%
Level 3	59	62%	58	59%	54	68%	40	40%	53	54%	57	59%
Level 2	6	6%	8	8%	6	8%	9	9%	5	5%	9	9%
Level 1	2	2%	2	2%			3	3%			2	2%
Total Tested	95		99		79		99		99		97	

Percentages may not total 100 due to rounding.

Results By Student Group

The number of tested students and the percentage of all tested students who scored at level 3 and above.

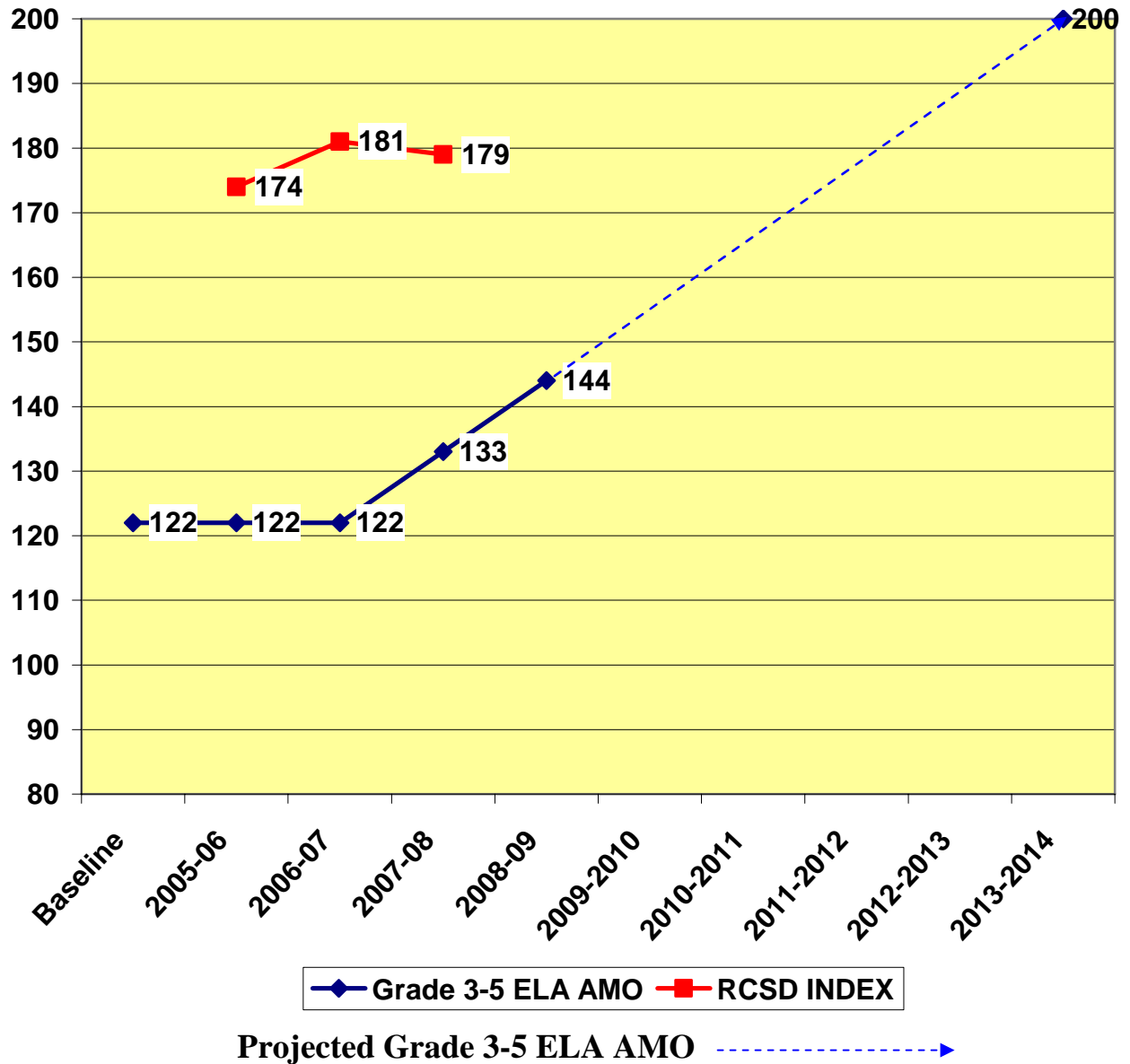
	Grade 3		Grade 4		Grade 5		Grade 6		Grade 7		Grade 8	
	#	%	#	%	#	%	#	%	#	%	#	%
All Students	95	92%	99	90%	79	92%	99	88%	99	95%	97	89%
General Education	82	99%	88	94%	68	97%	89	94%	88	100%	85	96%
Students with Disabilities	13	46%	11	55%	11	64%	10	30%	11	55%	12	33%
American Indian or Alaska Native												
Black or African American	2	S	2	S			1	S	1	S	1	S
Hispanic or Latino	4	S	6	83%	5	S	5	S	2	S	2	S
Asian or Pacific Islander	3	S	5	S	2	S	3	S	2	S	6	S
White	86	91%	86	90%	72	93%	90	90%	94	96%	88	88%
Multiracial												
Small Group Totals (S)	9	100%	7	100%	7	86%	9	67%	5	80%	9	100%
Female	44	91%	54	91%	40	93%	50	90%	48	94%	45	91%
Male	51	92%	45	89%	39	92%	49	86%	51	96%	52	87%
English Proficient	95	92%	99	90%	79	92%	97	-	99	95%	97	89%
Limited English Proficient							2	-				
Economically Disadvantaged			6	83%	5	80%	3	-	5	60%	4	-
Not Economically Disadvantaged	95	92%	93	90%	74	93%	96	-	94	97%	93	-
Migrant												
Not Migrant												

Percentages may not total 100 due to rounding.

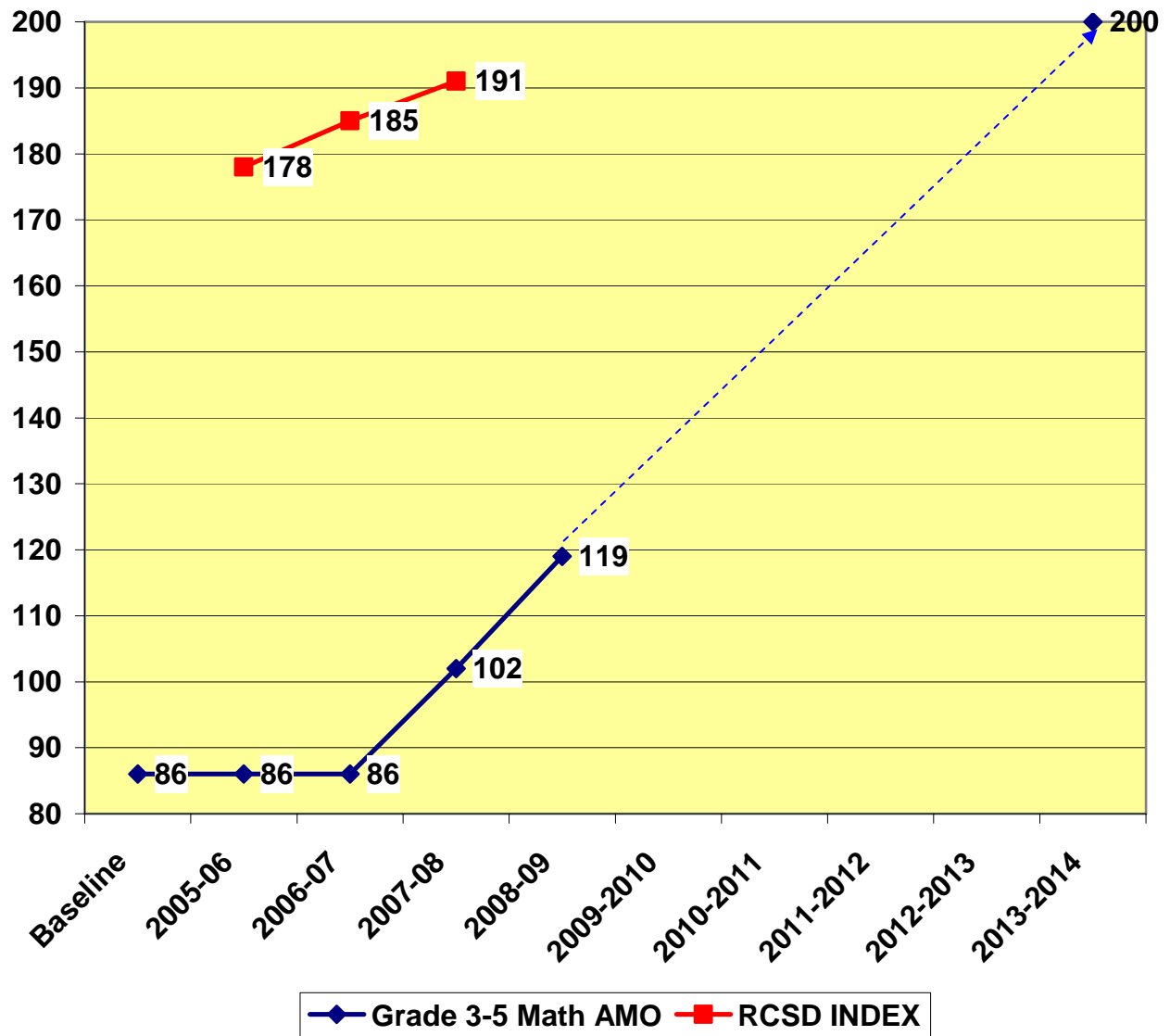
These calculations are based on all tested students. Accountability decisions are based on continuously enrolled students.

Annual Measureable Objectives 2002-2003 to 2013-2014

Annual Objectives Using Performance Index Grade 3-5 English Language Arts



Annual Objectives Using Performance Index Grade 3-5 Mathematics



Projected Grade 3-5 Math AMO



**BULKELEY MIDDLE SCHOOL
STUDENT ACHIEVEMENT DATA**

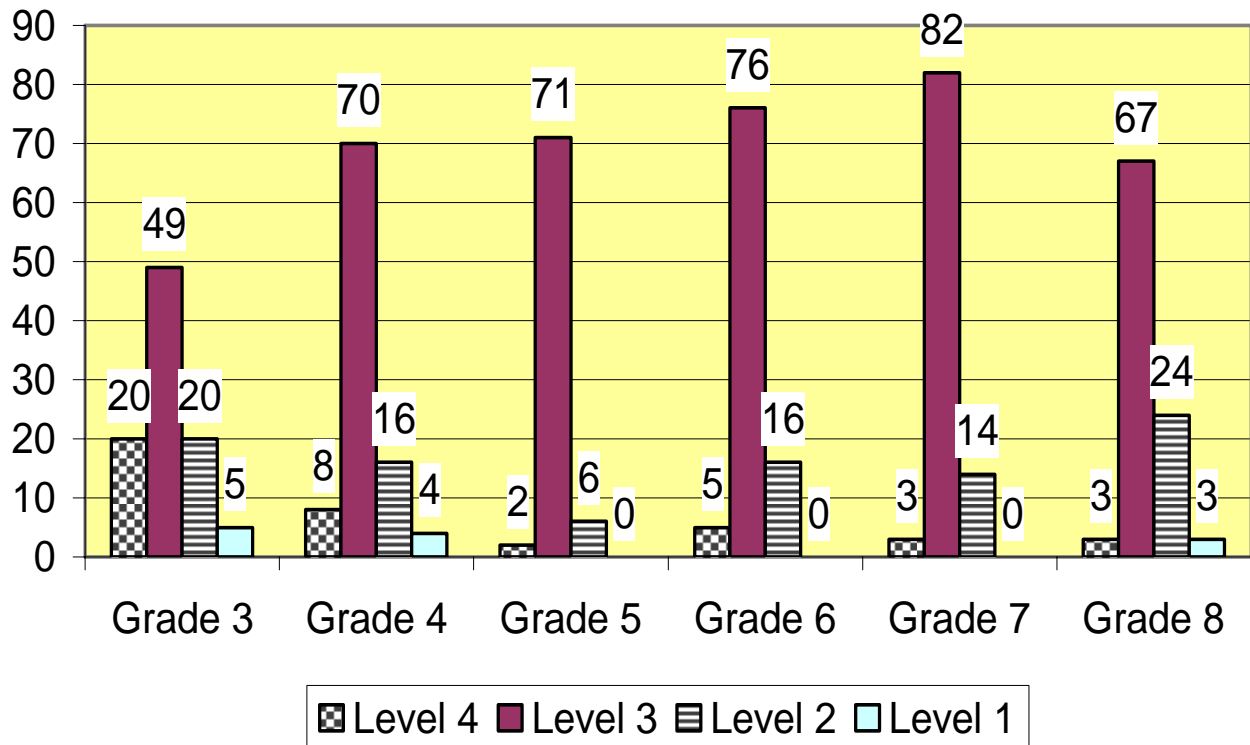
2007-2008

New York State Assessments Middle School Percent Proficient 2008-2009

	2001-2002	2002-2003	2003-2004	2004-2005	2005-2006	2006-2007	2007-2008	2008-2009
English Language Arts	65%	68%	51%	65%	6: 76% 7: 74% 8: 70%	6: 83% 7: 72% 8: 79%	6: 84% 7: 86% 8: 72%	6: 93% 7: 89% 8: 81%
Math	66%	79%	74%	79%	6: 73% 7: 82% 8: 68%	6: 87% 7: 86% 8: 87%	6: 88% 7: 95% 8: 89%	6: 95% 7: 92% 8: 92%
Science Grade 8	97%	92%	85%	91%	90%	96%	91%	Unavailable
Social Studies Grade 8	80%	69%	68%	87%	79%	89%	86%	Unavailable

**Percentage may not total 100 due to rounding.*

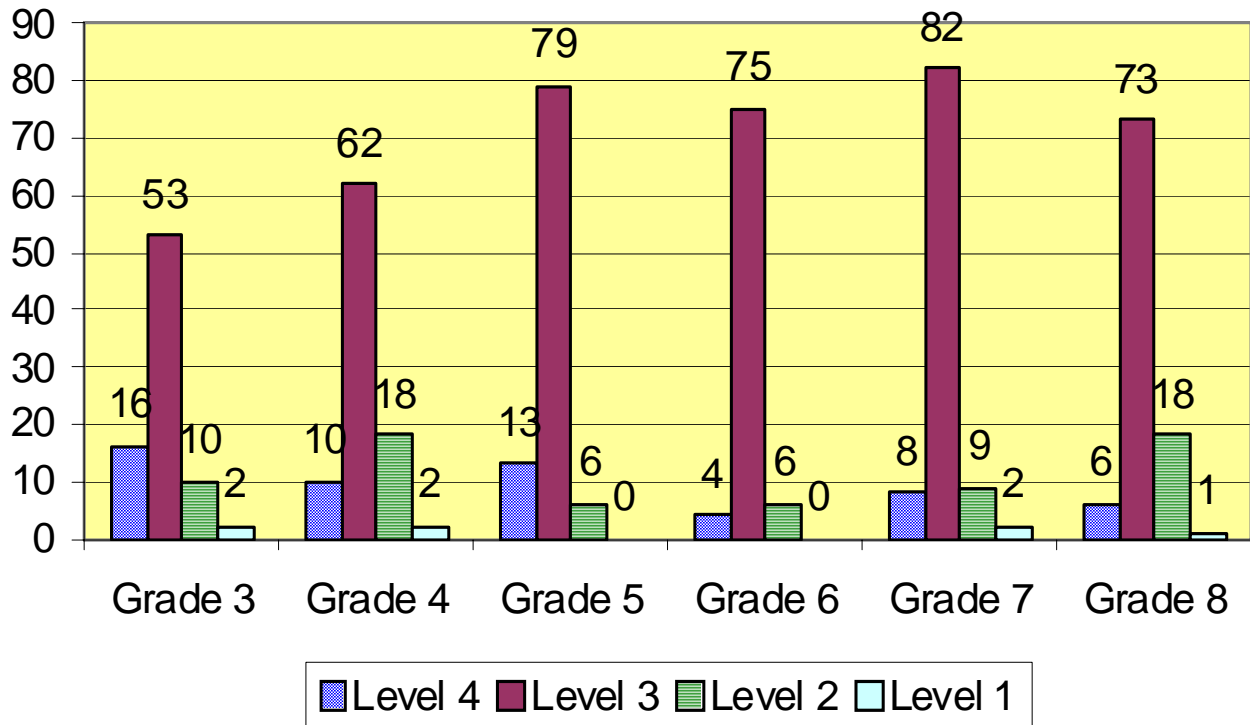
New York State Assessments Grade 3-8 English Language Arts 2007-2008



Student Performance Level	Grade 3		Grade 4		Grade 5		Grade 6		Grade 7		Grade 8	
	Level 4	20	21%	8	8%	2	3%	5	5%	3	3%	3
Level 3	49	52%	70	71%	71	90%	76	78%	82	83%	67	69%
Level 2	20	21%	16	16%	6	8%	16	16%	14	14%	24	25%
Level 1	5	5%	4	4%	0	0	0	0	0	0	3	3%
% Proficient	69	73%	78	80%	73	92%	81	84%	85	86%	70	72%
Students Tested	94		98		79		97		99		97	

**Percentage may not total 100 due to rounding.*

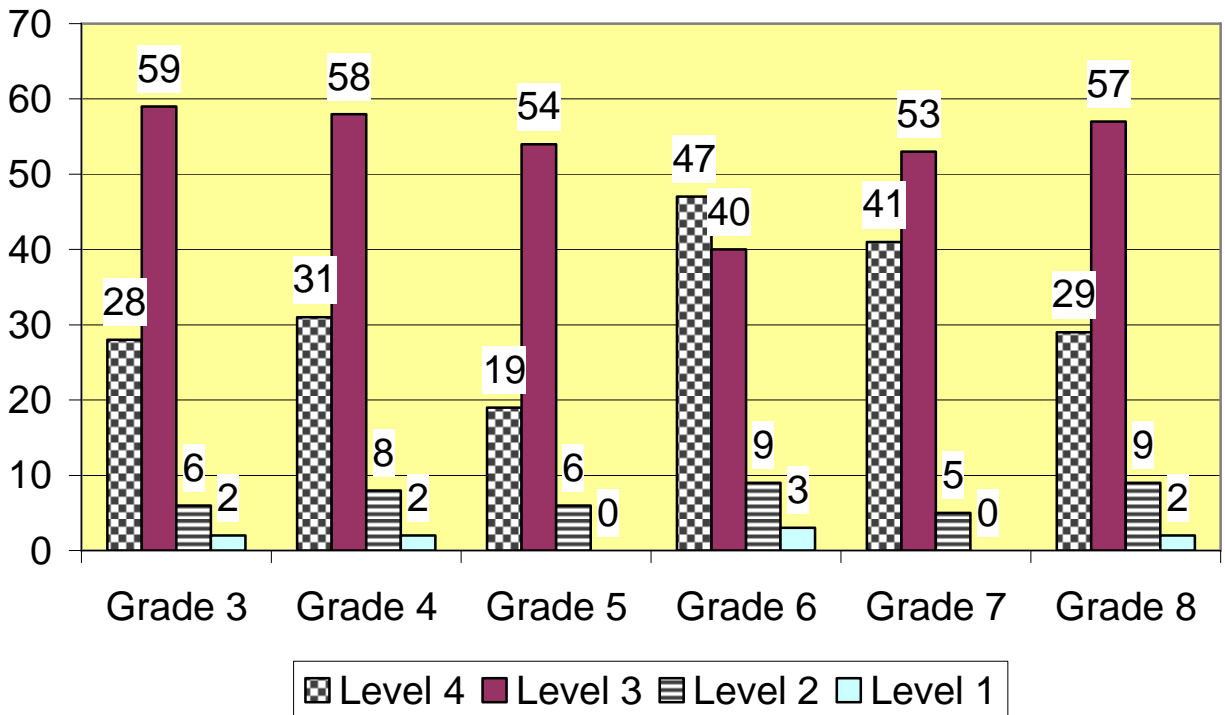
New York State Assessments Grade 3-8 English Language Arts 2008-2009



Student Performance Level	Grade 3		Grade 4		Grade 5		Grade 6		Grade 7		Grade 8	
Level 4	16	20%	10	11%	13	13%	4	5%	8	8%	6	6%
Level 3	53	65%	62	67%	79	81%	75	88%	82	81%	73	74%
Level 2	10	12%	18	20%	6	6%	6	7%	9	9%	18	18%
Level 1	2	2%	2	2%	0	0%	0	0%	2	2%	1	1%
% Proficient	85%		78%		94%		93%		89%		81%	
Students Tested	81		92		98		85		101		98	

**Percentage may not total 100 due to rounding.*

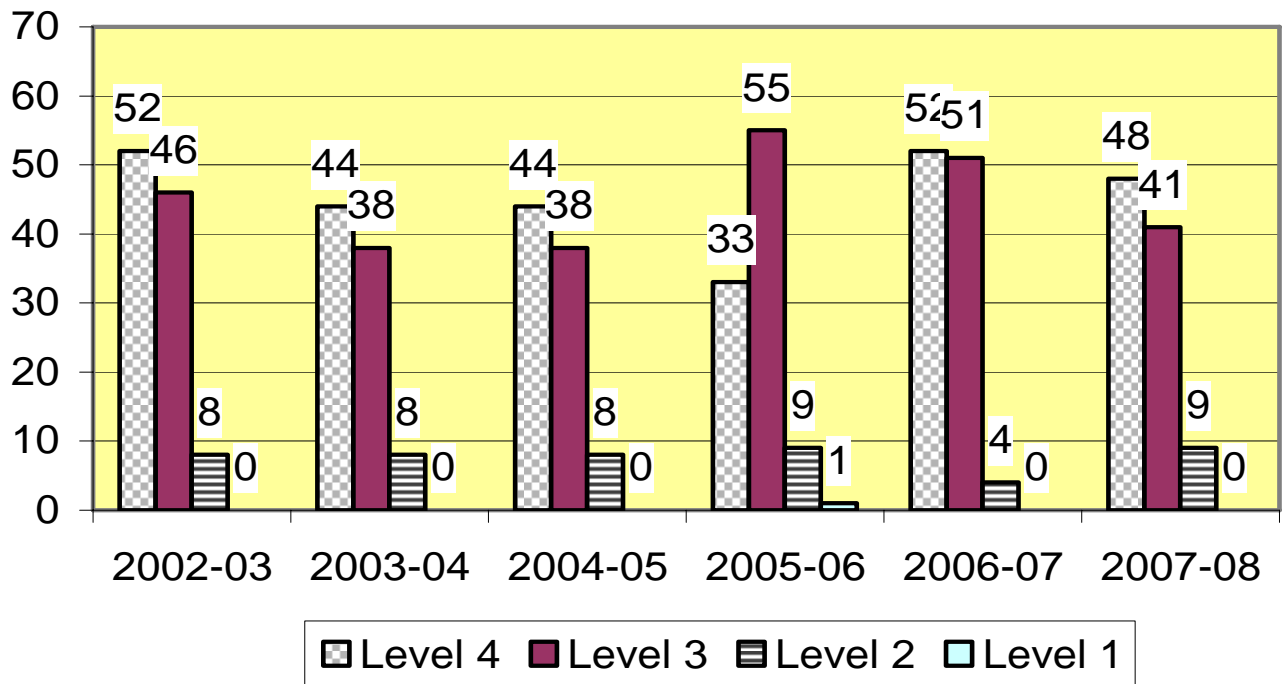
New York State Assessments Grades 3-8 Mathematics 2007-2008



Student Performance Level	Grade 3		Grade 4		Grade 5		Grade 6		Grade 7		Grade 8	
	Level 4	28	29%	31	31%	19	24%	47	47%	41	41%	29
Level 3	59	62%	58	59%	54	68%	40	40%	53	54%	57	59%
Level 2	6	6%	8	8%	6	8%	9	9%	5	5%	9	9%
Level 1	2	2%	2	2%	0	0	3	3%	0	0	2	2%
% Proficient	87	92%	89	90%	73	92%	87	88%	94	95%	86	89%
Students Tested	95		99		79		99		99		97	

**Percentage may not total 100 due to rounding.*

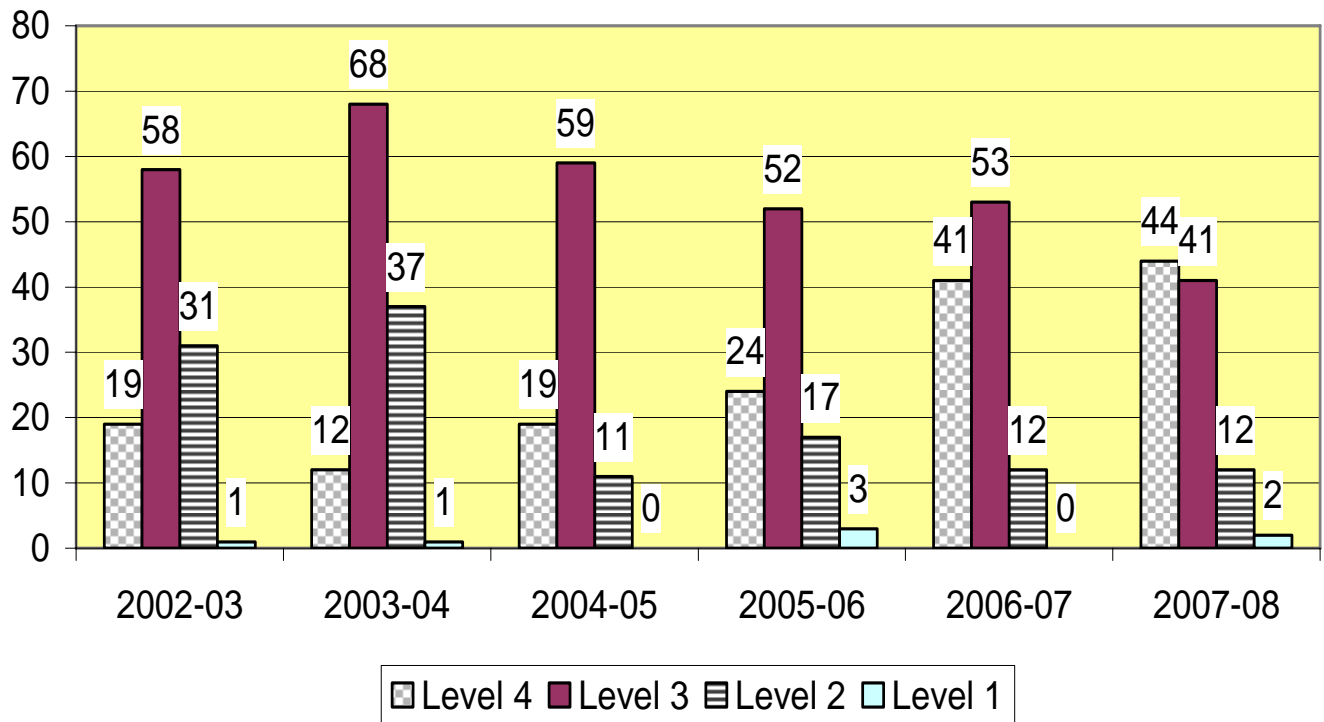
New York State Assessments Grade 8 Science 2007-2008



Student Performance Level	2002-2003		2003-2004		2004-2005		2005-2006		2006-2007		2007-2008	
	Level 4	52	49%	44	37%	44	49%	33	34%	52	49%	48
Level 3	46	43%	38	48%	38	42%	55	56%	51	48%	41	42%
Level 2	8	8%	8	13%	8	9%	9	9%	4	3%	9	9%
Level 1	0	0%	0	0%	0	0%	1	1%	0	0%	0	0%
% Proficient Level 3 + 4	98	92%	82	85%	82	91%	88	90%	103	96%	89	91%

**Percentage may not total 100 due to rounding.*

New York State Assessments Grade 8 Social Studies 2007-2008



Student Performance Level	2002-2003		2003-2004		2004-2005		2005-2006		2006-2007		2007-2008	
Level 4	19	17%	12	10%	19	21%	24	25%	41	39%	44	44%
Level 3	58	52%	68	58%	59	66%	52	54%	53	50%	41	41%
Level 2	31	28%	37	31%	11	12%	17	18%	12	11%	12	12%
Level 1	1	1%	1	1%	0	0%	3	3%	0	0%	2	2%
% Proficient Level 3 + 4	77	69%	80	68%	78	87%	76	79%	94	89%	85	86%

**Percentage may not total 100 due to rounding.*

Grade 3-8 English Language Arts Results 2007-2008

Results By Performance Level

The number of tested students and the percentage of all tested students performing in each level.

■ Level 3 and above

	Grade 3		Grade 4		Grade 5		Grade 6		Grade 7		Grade 8	
	#	%	#	%	#	%	#	%	#	%	#	%
Level 4	20	21%	8	8%	2	3%	5	5%	3	3%	3	3%
Level 3	49	52%	70	71%	71	90%	76	78%	82	83%	67	69%
Level 2	20	21%	16	16%	6	8%	16	16%	14	14%	24	25%
Level 1	5	5%	4	4%							3	3%
Total Tested	94		98		79		97		99		97	

Percentages may not total 100 due to rounding.

Results By Student Group

The number of tested students and the percentage of all tested students who scored at level 3 and above.

	Grade 3		Grade 4		Grade 5		Grade 6		Grade 7		Grade 8	
	#	%	#	%	#	%	#	%	#	%	#	%
All Students	94	73%	98	80%	79	92%	97	84%	99	86%	97	72%
General Education	81	81%	88	84%	68	97%	87	90%	88	94%	85	81%
Students with Disabilities	13	23%	10	40%	11	64%	10	30%	11	18%	12	8%
American Indian or Alaska Native												
Black or African American	2	S	2	S			1	S	1	S	1	S
Hispanic or Latino	4	S	4	S	5	S	4	S	2	S	2	S
Asian or Pacific Islander	3	S	5	80%	2	S	3	S	2	S	6	S
White	85	72%	87	79%	72	92%	89	84%	94	86%	88	69%
Multiracial												
Small Group Totals (S)	9	89%	6	83%	7	100%	8	75%	5	80%	9	100%
Female	43	70%	54	83%	40	95%	48	92%	48	90%	45	84%
Male	51	76%	44	75%	39	90%	49	76%	51	82%	52	62%
English Proficient	94	73%	98	80%	79	92%	96	-	99	86%	97	72%
Limited English Proficient							1	-				
Economically Disadvantaged			6	100%	5	80%	3	-	5	60%	4	-
Not Economically Disadvantaged	94	73%	92	78%	74	93%	94	-	94	87%	93	-
Migrant												
Not Migrant												

Percentages may not total 100 due to rounding.

These calculations are based on all tested students. Accountability decisions are based on continuously enrolled students.

Grade 3-8 Mathematics Results 2007-2008

Results By Performance Level

The number of tested students and the percentage of all tested students performing in each level.

■ Level 3 and above

	Grade 3		Grade 4		Grade 5		Grade 6		Grade 7		Grade 8	
	#	%	#	%	#	%	#	%	#	%	#	%
Level 4	28	29%	31	31%	19	24%	47	47%	41	41%	29	30%
Level 3	59	62%	58	59%	54	68%	40	40%	53	54%	57	59%
Level 2	6	6%	8	8%	6	8%	9	9%	5	5%	9	9%
Level 1	2	2%	2	2%			3	3%			2	2%
Total Tested	95		99		79		99		99		97	

Percentages may not total 100 due to rounding.

Results By Student Group

The number of tested students and the percentage of all tested students who scored at level 3 and above.

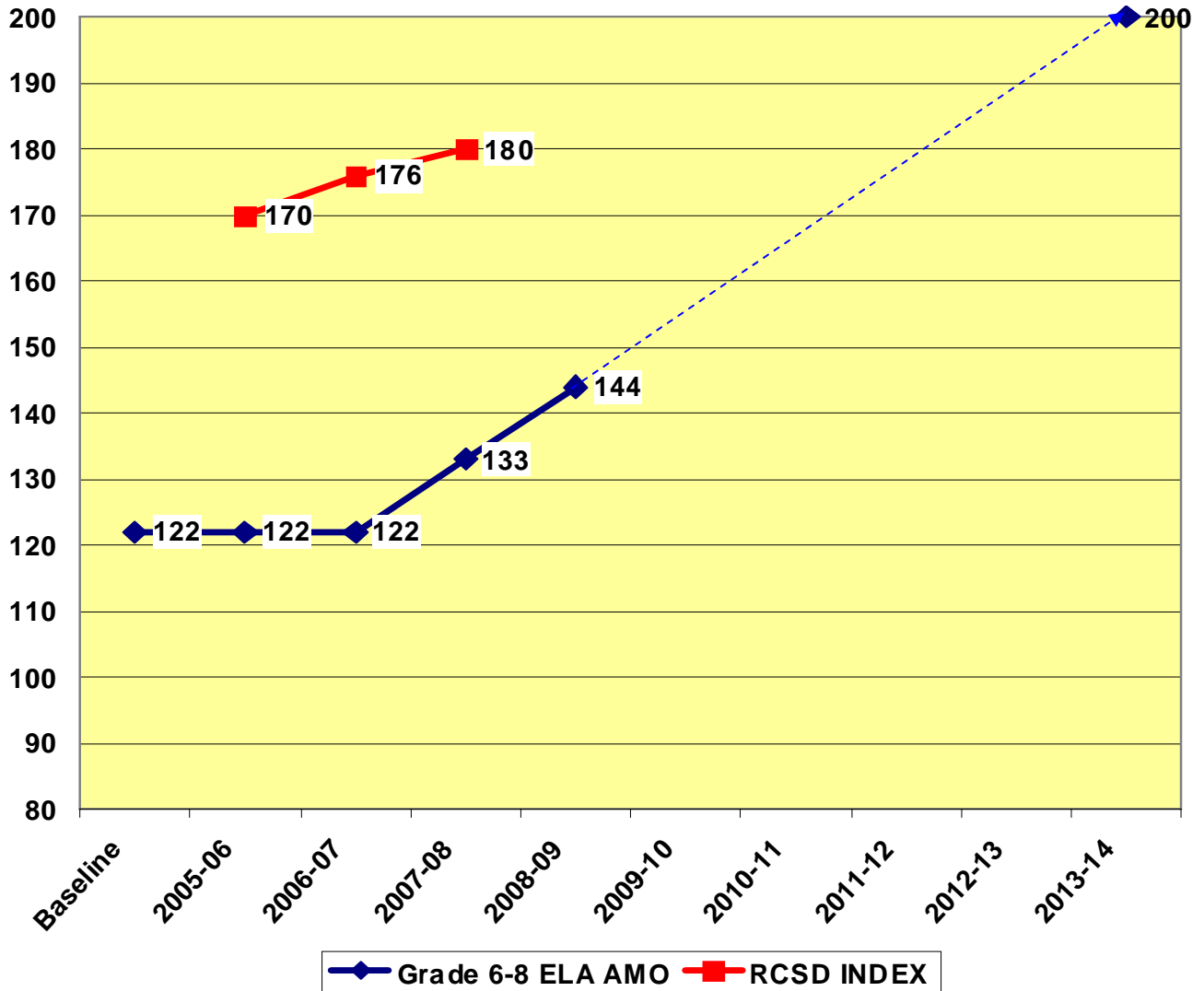
	Grade 3		Grade 4		Grade 5		Grade 6		Grade 7		Grade 8	
	#	%	#	%	#	%	#	%	#	%	#	%
All Students	95	92%	99	90%	79	92%	99	88%	99	95%	97	89%
General Education	82	99%	88	94%	68	97%	89	94%	88	100%	85	96%
Students with Disabilities	13	46%	11	55%	11	64%	10	30%	11	55%	12	33%
American Indian or Alaska Native												
Black or African American	2	S	2	S			1	S	1	S	1	S
Hispanic or Latino	4	S	6	83%	5	S	5	S	2	S	2	S
Asian or Pacific Islander	3	S	5	S	2	S	3	S	2	S	6	S
White	86	91%	86	90%	72	93%	90	90%	94	96%	88	88%
Multiracial												
Small Group Totals (S)	9	100%	7	100%	7	86%	9	67%	5	80%	9	100%
Female	44	91%	54	91%	40	93%	50	90%	48	94%	45	91%
Male	51	92%	45	89%	39	92%	49	86%	51	96%	52	87%
English Proficient	95	92%	99	90%	79	92%	97	-	99	95%	97	89%
Limited English Proficient							2	-				
Economically Disadvantaged			6	83%	5	80%	3	-	5	60%	4	-
Not Economically Disadvantaged	95	92%	93	90%	74	93%	96	-	94	97%	93	-
Migrant												
Not Migrant												

Percentages may not total 100 due to rounding.

These calculations are based on all tested students. Accountability decisions are based on continuously enrolled students.

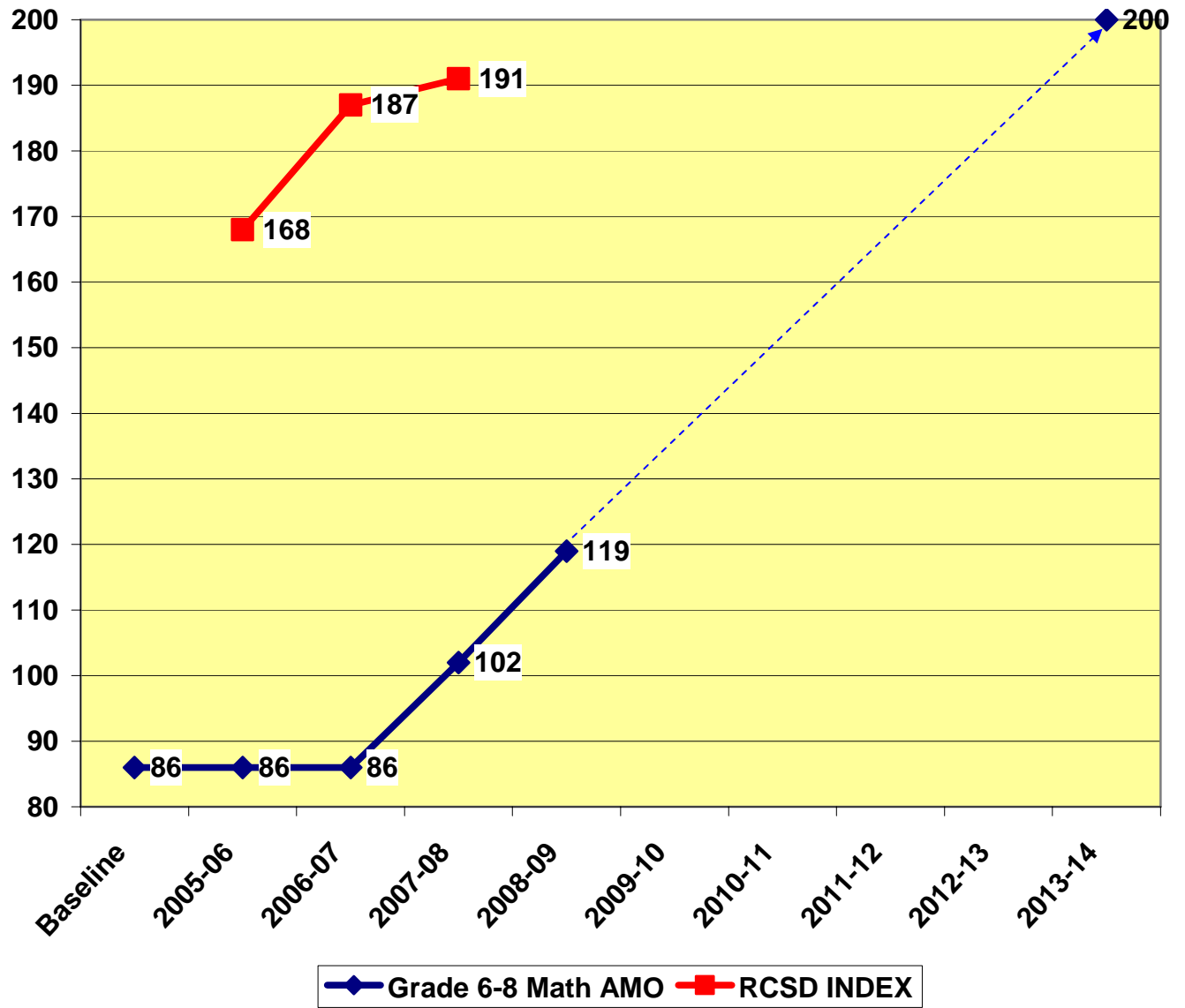
Annual Measureable Objectives 2002-2003 to 2013-2014

Annual Objectives Using Performance Index English Language Arts - Grade 6-8



Projected Grade 6-8 ELA AMO 

Annual Objectives Using Performance Index Mathematics - Grade 6-8



Projected Grade 6-8 Math AMO 

**RHINEBECK HIGH SCHOOL
STUDENT ACHIEVEMENT DATA**

2007 - 2008

2007-2008 Regents Exam Results

		All Students				General-Education Students				Students with Disabilities			
		Total Tested	Percentage of students scoring at or above:			Total Tested	Percentage of students scoring at or above:			Total Tested	Percentage of students scoring at or above:		
			55	65	85		55	65	85		55	65	85
Comprehensive English	2007-08	91	98%	92%	42%	86	99%	97%	44%	5	80%	20%	0%
	2006-07	109	97%	94%	38%	105	-	-	-	4	-	-	-
	2005-06	101	99%	97%	53%	95	100%	98%	55%	6	83%	83%	33%
Mathematics A	2007-08	125	97%	95%	51%	117	97%	96%	54%	8	100%	88%	13%
	2006-07	105	100%	99%	63%	102	-	-	-	3	-	-	-
	2005-06	109	100%	99%	57%	102	100%	100%	60%	7	100%	86%	14%
Mathematics B	2007-08	66	88%	79%	26%	66	88%	79%	26%	0			
	2006-07	55	93%	84%	29%	55	93%	84%	29%	0			
	2005-06	86	95%	91%	37%	84	-	-	-	2	-	-	-
Integrated Algebra	2007-08	37	100%	100%	27%	36	-	-	-	1	-	-	-
	2006-07	N/A	N/A	N/A	N/A	N/A	N/A	N/A	N/A	N/A	N/A	N/A	N/A
	2005-06	N/A	N/A	N/A	N/A	N/A	N/A	N/A	N/A	N/A	N/A	N/A	N/A
Global History and Geography	2007-08	99	98%	92%	48%	93	98%	94%	51%	6	100%	67%	17%
	2006-07	96	97%	93%	43%	92	-	-	-	4	-	-	-
	2005-06	114	96%	92%	40%	110	-	-	-	4	-	-	-
U.S. History and Government	2007-08	88	99%	99%	63%	84	-	-	-	4	-	-	-
	2006-07	110	100%	93%	58%	105	100%	93%	59%	5	100%	80%	40%
	2005-06	104	97%	95%	66%	96	100%	99%	70%	8	63%	50%	25%
Living Environment	2007-08	93	100%	100%	56%	89	-	-	-	4	-	-	-
	2006-07	96	100%	97%	45%	91	100%	97%	47%	5	100%	100%	0%
	2005-06	104	100%	92%	42%	100	-	-	-	4	-	-	-
Physical Setting/Earth Science	2007-08	98	99%	94%	42%	87	99%	93%	47%	11	100%	100%	0%
	2006-07	85	100%	89%	34%	82	-	-	-	3	-	-	-
	2005-06	85	100%	96%	53%	81	-	-	-	4	-	-	-
Physical Setting/Chemistry	2007-08	49	100%	100%	24%	49	100%	100%	24%	0			
	2006-07	58	100%	97%	19%	58	100%	97%	19%	0			
	2005-06	60	97%	95%	52%	58	-	-	-	2	-	-	-
Physical Setting/Physics	2007-08	52	96%	88%	44%	52	96%	88%	44%	0			
	2006-07	48	98%	94%	42%	47	-	-	-	1	-	-	-
	2005-06	26	100%	96%	46%	26	100%	96%	46%	0			
Comprehensive French	2007-08	10	100%	100%	100%	10	100%	100%	100%	0			
	2006-07	14	100%	100%	86%	14	100%	100%	86%	0			
	2005-06	16	100%	100%	81%	16	100%	100%	81%	0			
Comprehensive Latin	2007-08	16	100%	100%	100%	16	100%	100%	100%	0			
	2006-07	3	-	-	-	3	-	-	-	0	-	-	-
	2005-06	7	100%	100%	71%	7	100%	100%	71%	0			
Comprehensive Spanish	2007-08	22	100%	100%	100%	22	100%	100%	100%	0			
	2006-07	31	100%	100%	97%	31	100%	100%	97%	0			
	2005-06	30	100%	100%	97%	30	100%	100%	97%	0			

2004 Total Cohort Performance on Regents Exams After Four Years

English Language Arts Results

Results by Student Group	2004 Cohort			
	Number of Students	Percentage scoring at level(s):		
		2-4	3-4	4
All Students	109	95%	93%	39%
Female	53	94%	91%	43%
Male	56	96%	95%	34%
American Indian or Alaska Native				
Black or African American				
Hispanic or Latino	4	-	-	-
Asian or Native Hawaiian/Other				
Pacific Islander	8	-	-	-
White	97	97%	95%	38%
Multiracial				
Small Group Totals	12	83%	75%	42%
General-Education Students	104	95%	93%	40%
Students with Disabilities	5	100%	80%	0%
English Proficient	106	-	-	-
Limited English Proficient	3	-	-	-
Economically Disadvantaged	7	86%	71%	14%
Not Disadvantaged	102	96%	94%	40%
Migrant				
Not Migrant	109	95%	93%	39%

NOTES

The - symbol indicates that data for a group of students have been suppressed. If a group has fewer than five students, data for that group and the next smallest group(s) are suppressed to protect the privacy of individual students.

Other Assessments	2004 Cohort			
	Number of Students	Number scoring at level(s):		
		2-4	3-4	4
New York State Alternate Assessment (NYSAA): High School Equivalent ***	0			

Mathematics Results

Results by Student Group

	2004 Cohort			
	Number of Students	Percentage scoring at level(s):		
		2-4	3-4	4
All Students	109	97%	96%	56%
Female	53	96%	96%	53%
Male	56	98%	96%	59%
American Indian or Alaska Native				
Black or African American				
Hispanic or Latino	4	-	-	-
Asian or Native Hawaiian/Other				
Pacific Islander	8	-	-	-
White	97	97%	96%	56%
Multiracial				
Small Group Totals	12	100%	100%	58%
General-Education Students	104	97%	97%	58%
Students with Disabilities	5	100%	80%	20%
English Proficient	106	-	-	-
Limited English Proficient	3	-	-	-
Economically Disadvantaged	7	100%	100%	29%
Not Disadvantaged	102	97%	96%	58%
Migrant				
Not Migrant	109	97%	96%	56%

NOTES

The - symbol indicates that data for a group of students have been suppressed. If a group has fewer than five students, data for that group and the next smallest group(s) are suppressed to protect the privacy of individual students.

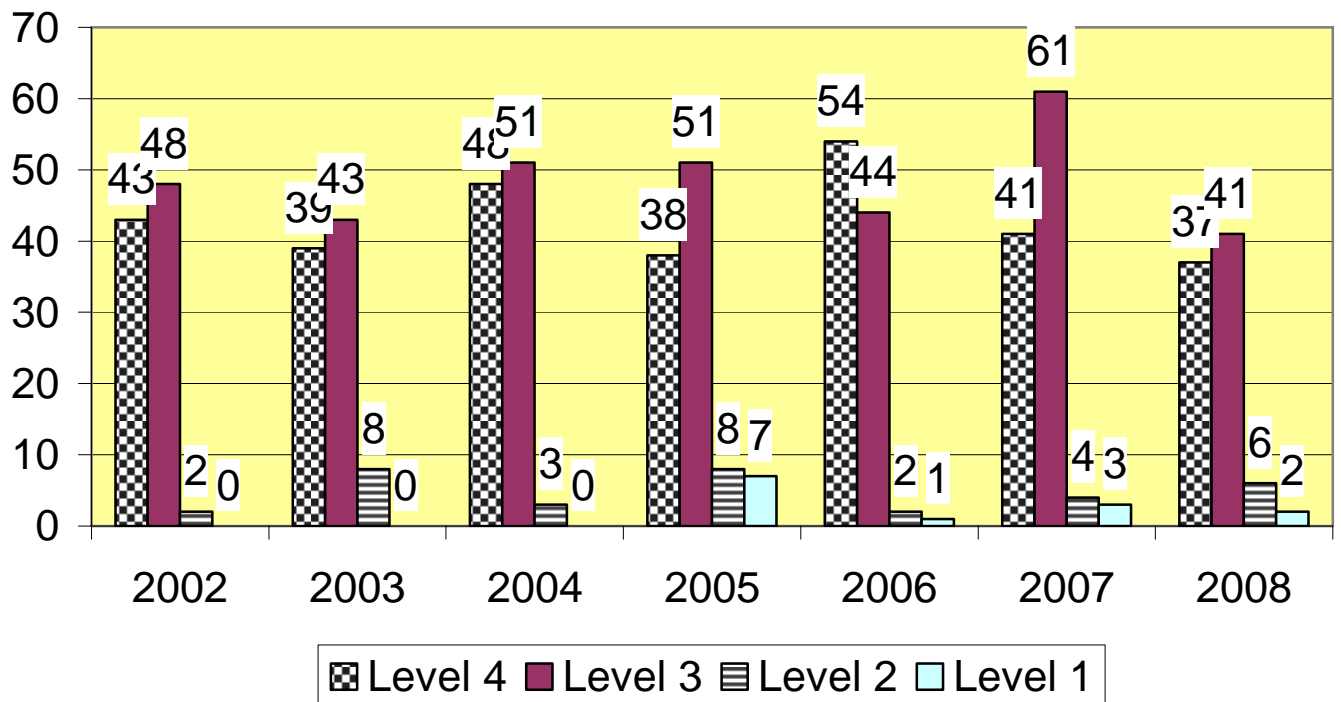
Other Assessments

	2004 Cohort			
	Number of Students	Number scoring at level(s):		
		2-4	3-4	4
New York State Alternate Assessment (NYSAA): High School Equivalent ***	0			

Social Studies and Science Results

	All Students				General-Education Students				Students with Disabilities			
	Cohort Enrollment	Percentage of students scoring:			Cohort Enrollment	Percentage of students scoring:			Cohort Enrollment	Percentage of students scoring:		
		55-64	65-84	85-100		55-64	65-84	85-100		55-64	65-84	85-100
Global History and Geography	114	4%	52%	39%	109	3%	51%	41%	5	40%	60%	0%
U.S. History and Government	114	5%	32%	53%	109	5%	31%	54%	5	20%	60%	20%
Science	114	3%	46%	47%	109	3%	43%	50%	5	0%	100%	0%

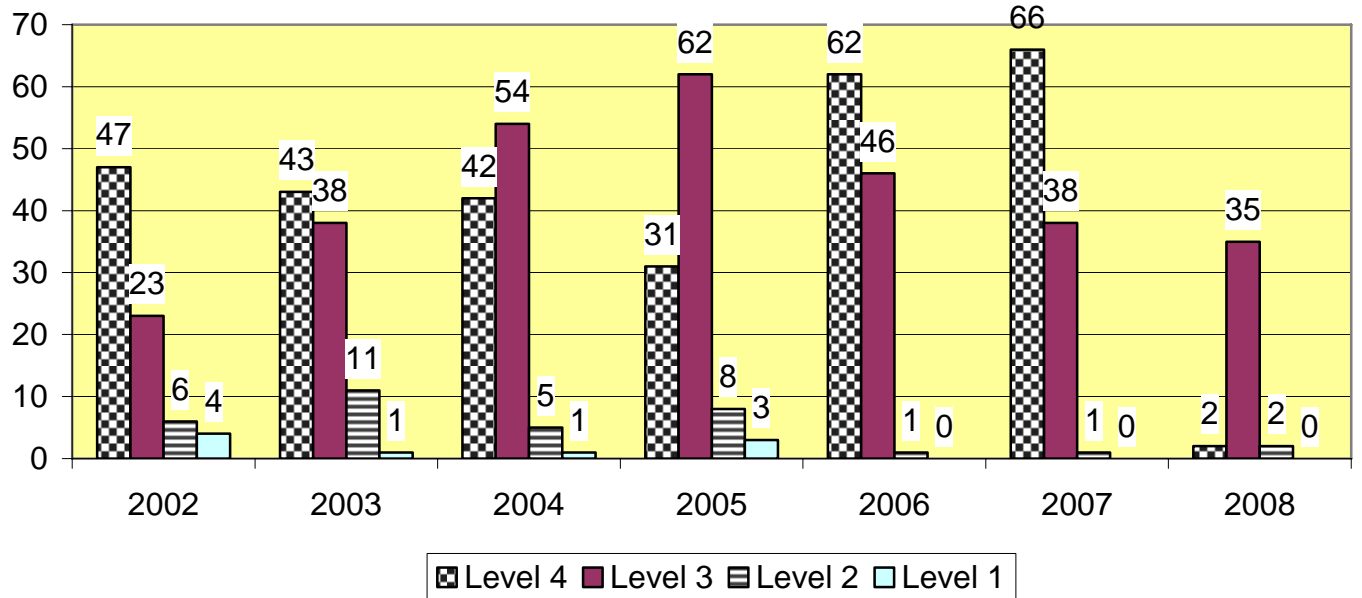
New York State Assessments English Language Arts Regents 2008



Student Performance Level	2001-2002		2002-2003		2003-2004		2004-2005		2005-2006		2006-2007		2007-2008	
	Level 4 85-100	43	41%	39	39%	48	47%	38	37%	54	53%	41	38%	37
Level 3 65-84	48	56%	43	43%	51	50%	51	49%	44	44%	61	56%	41	48%
Level 2 55-64	2	2%	8	8%	3	3%	8	8%	2	2%	4	4%	6	7%
Level 1 0-54	0	0%	0	0%	0	0%	7	6%	1	1%	3	3%	2	2%
% Proficient Level 3+4	91	97%	82	82%	99	97%	89	86%	98	97%	102	94%	78	91%

*Percentage may not total 100 due to rounding.

New York State Assessments Mathematics A Regents 2008



Student Performance Level	2001-2002		2002-2003		2003-2004		2004-2005		2005-2006		2006-2007		2007-2008	
	Level 4 85-100	47	55%	43	43%	42	41%	31	30%	62	57%	66	63%	2
Level 3 65-84	23	27%	37	37%	54	53%	62	60%	46	42%	38	36%	35	90%
Level 2 55-64	6	7%	11	11%	5	5%	8	8%	1	1%	1	1%	2	5%
Level 1 0-54	4	5%	1	1%	1	1%	3	2%	0	0%	0	0%	0	0%
% Proficient Level 3+4	70	82%	80	80%	96	94%	93	90%	108	99%	104	99%	37	95%

**Percentage may not total 100 due to rounding.*

Rhinebeck High School Meat SAT Scores

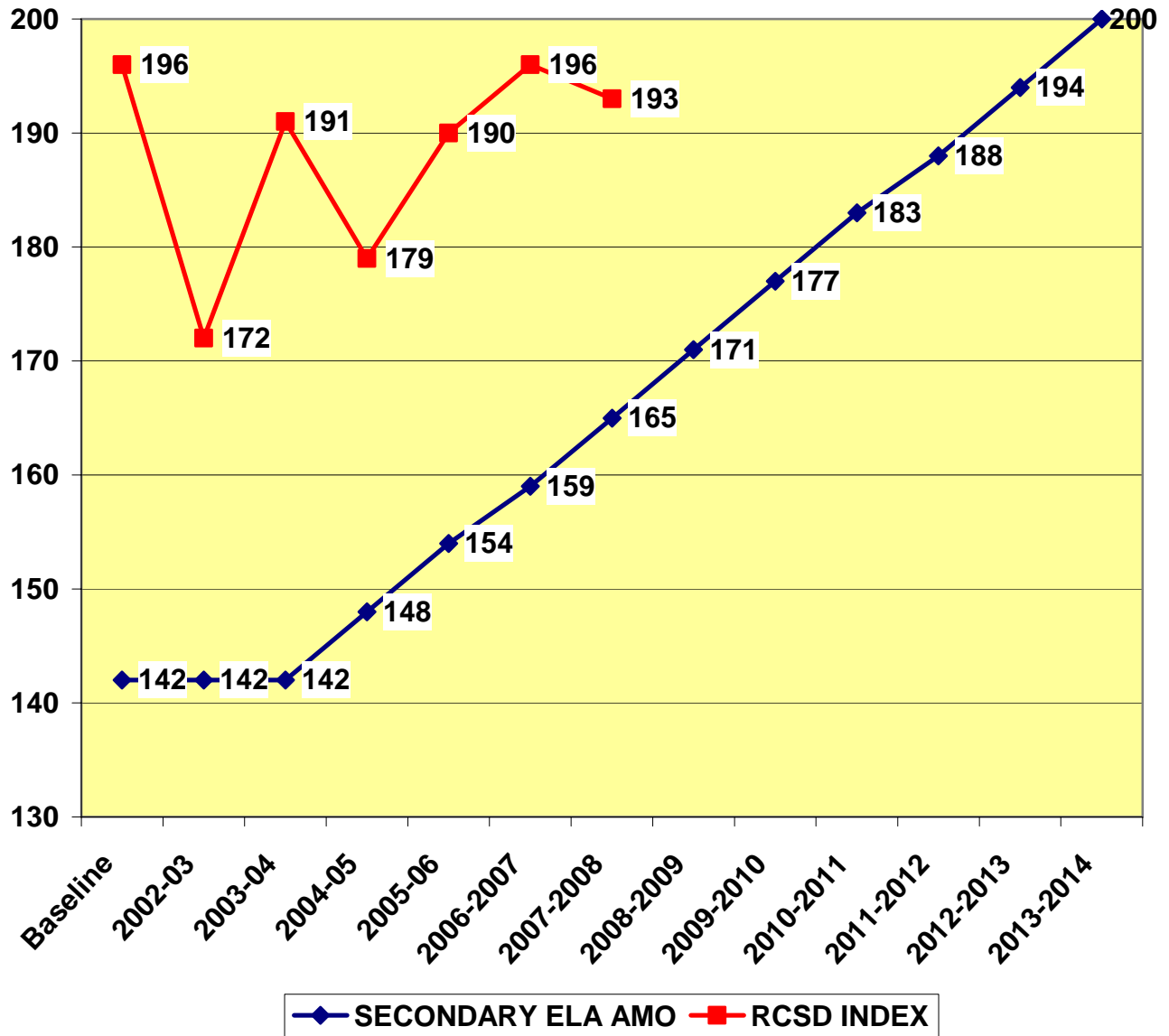
	2003		2004		2005		2006			2007			2008		
	V	M	V	M	V	M	CR	M	WR	CR	M	WR	CR	M	WR
Rhinebeck	551	549	548	544	581	572	556	548	547	576	557	549	551	559	543
NY State	496	510	497	510	497	511	493	510	483	491	505	482	488	504	481
National	507	519	508	518	508	520	503	518	497	502	515	494	502	515	494

Rhinebeck High School AP Exam Results

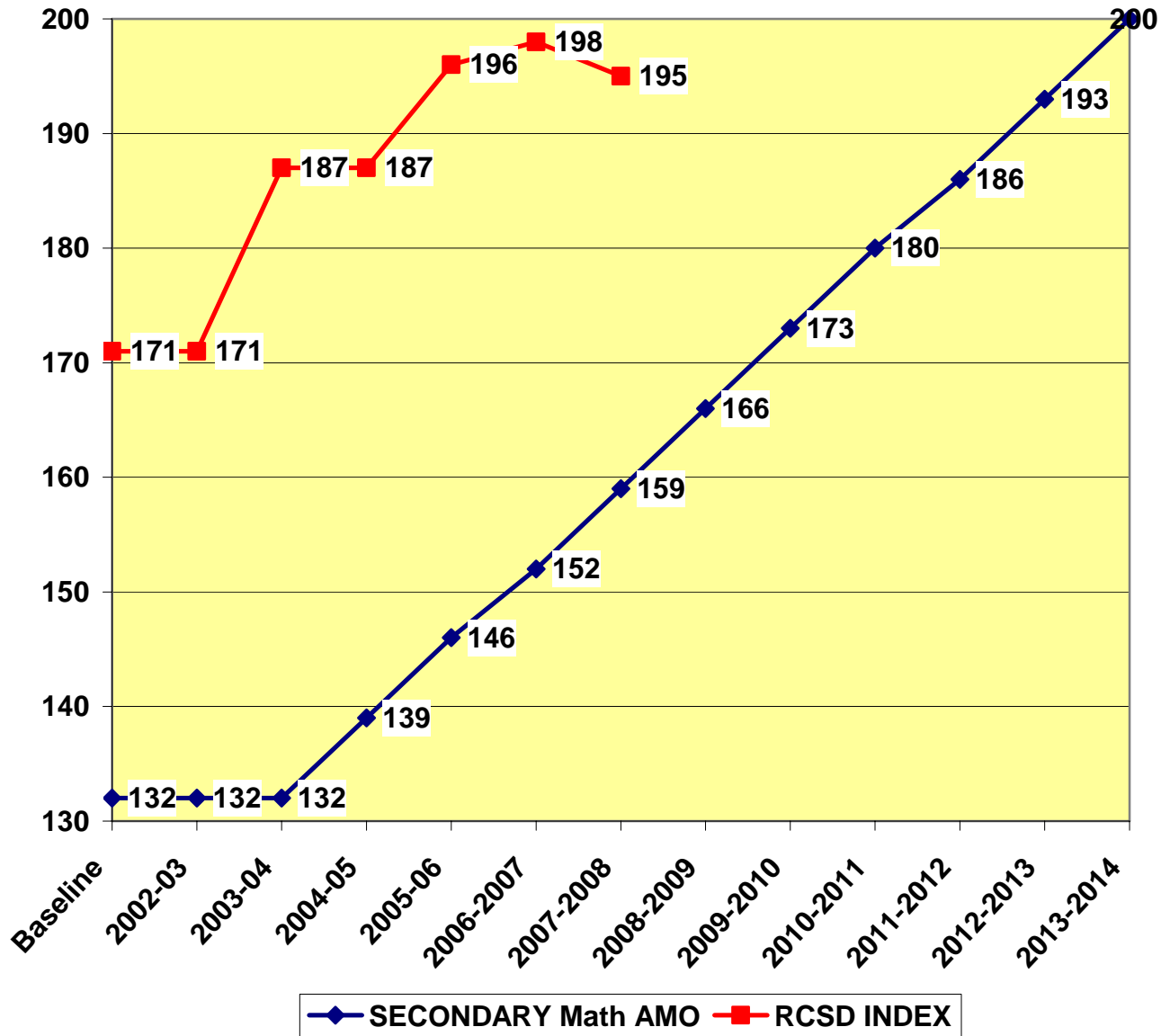
AP GRADE	BIO	CALC AB	CHEM	COMP SCI. A	ELA/ COMP	EURO HIST	FRENCH	PHYSICS C MECH.	SPANISH	WORLD HIST	TOTAL GRDS. RPT.	% TOTAL
5	2	9	2	1	3		1	4	1	2	25	22%
4	3	5		1	4			4	4	10	31	27%
3	3	6	2	3	5	1		3	5	5	33	29%
2		1	1	1		2	2	1	1	7	16	14%
1		2	2	2		1	1	1			9	8%
Total	8	23	7	8	12	4	4	13	11	24	114	100%

Annual Measureable Objectives 2002-2003 to 2013-2014

Annual Objectives Using Performance Index Secondary English Language Arts



Annual Objectives Using Performance Index Secondary Mathematics



RCT and Second Language Proficiency 2007-2008

<i>Examination</i>	<i>Student Group</i>	<i>Count of Students Tested</i>	<i>Number of Students Passing</i>	<i>Percent of Students Passing</i>
RCT Reading	All Students	5	5	100%
	General Education	0	0	0%
	Students with Disabilities	5	5	100%
RCT Writing	All Students	5	5	100%
	General Education	0	0	0%
	Students with Disabilities	5	5	100%
RCT Mathematics	All Students	0	0	0%
	General Education	0	0	0%
	Students with Disabilities	0	0	0%
RCT Science	All Students	0	0	0%
	General Education	0	0	0%
	Students with Disabilities	0	0	0%
RCT Global Studies	All Students	0	0	0%
	General Education	0	0	0%
	Students with Disabilities	0	0	0%
RCT U.S. History and Government	All Students	0	0	0%
	General Education	0	0	0%
	Students with Disabilities	0	0	0%
Second Language Proficiency French	All Students	28	27	96%
	General Education	27	27	100%
	Students with Disabilities	1	0	0%
Second Language Proficiency Latin	All Students	14	11	79%
	General Education	14	11	79%
	Students with Disabilities	0	0	0%
Second Language Proficiency Spanish	All Students	51	48	94%
	General Education	49	46	94%
	Students with Disabilities	2	2	100%